

EVERPURE DRINKING WATER FAUCETS



PRODUCT OVERVIEW

Everpure drinking water faucets deliver a steady stream of premium quality filtered water from Everpure commercial grade water filtration systems. These separate filter faucets are available in three stunning styles to match today's high end kitchen faucets.

FEATURES

- Versatile design
- Selection of three beautiful styles to match the most popular designer faucets
- Lead-free
- Forged brass construction
- Aerator tip provides even, clear stream of filtered water
- Ceramic disc type valve
- .5 gpm flow
- Certified to NSF/ANSI 61
- RO compatible with the use of a separate air gap (EV-312339)

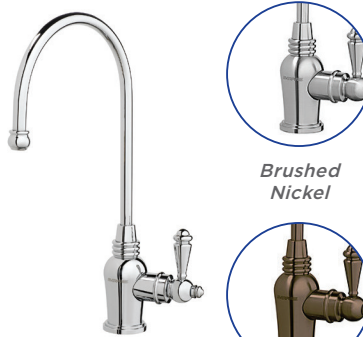
SPECIFICATIONS

- Flow Rate - .5 gal./min. (1.9L/min.)
- Operating Pressure - 20 to 90 psi
- Temperature - 50°F to 90°F (10°C to 35°C)
- Installation - 1/2" or standard sink hole installation



Chrome

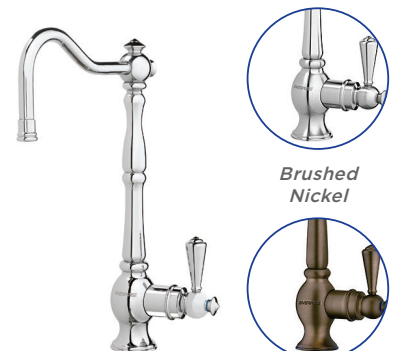
Brushed Nickel



Chrome

Brushed Nickel

Tuscan Bronze



Chrome

Brushed Nickel

Tuscan Bronze

Designer Series

Faucet Dimensions:
6.25"W X 11.5"H

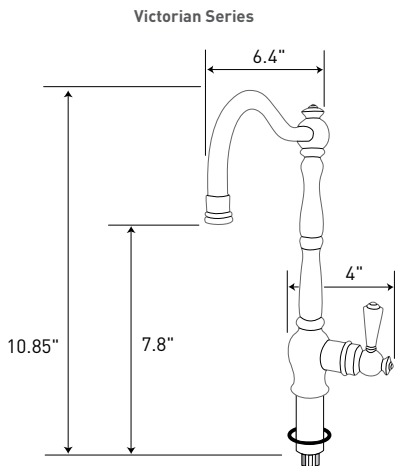
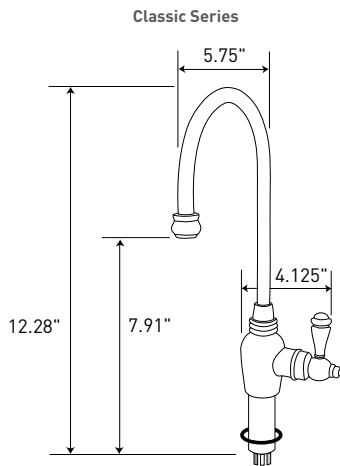
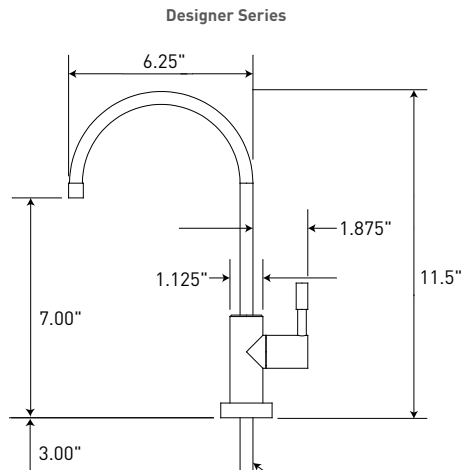
Classic Series

Faucet Dimensions:
5.75"W X 12.28"H

Victorian Series

Faucet Dimensions:
6.4"W X 10.85"H

FAUCET DIMENSIONS



Universal Air Gap Adapter

DESIGNER SERIES FAUCETS

ITEM NUMBER	FINISH
EV-997056	Chrome
EV-997059	Brushed Nickel

CLASSIC SERIES FAUCETS

ITEM NUMBER	FINISH
EV-997062	Chrome
EV-997063	Brushed Nickel
EV-997064	Tuscan Bronze

VICTORIAN SERIES FAUCETS

ITEM NUMBER	FINISH
EV-997067	Chrome
EV-997068	Brushed Nickel
EV-997069	Tuscan Bronze

UNIVERSAL AIR GAP ADAPTER

ITEM NUMBER	DESCRIPTION
EV-312339	Everpure Wall-Mounted Universal Air Gap