



Pinnacle Express Exclusive
One Year Limited Parts and Labor
Warranty Included
(Not Available for E-commerce Transactions)



Passion. Design. Value.

Coyote Outdoor Living's passion for design, value and the outdoor lifestyle is demonstrated in their outdoor culinary and entertainment products. They are dedicated to elevating and improving every moment spent, memory made, and bite or sip taken in outdoor spaces. Based in Dallas, Texas, Coyote Outdoor Living specializes in the design, development, and production of high quality outdoor kitchen equipment. Coyote is committed to making outdoor kitchens an attainable reality for anyone who is passionate about cooking, entertaining or simply relaxing outdoors. They are proud to offer durable products at a great value so they can enable all outdoor chefs and enthusiasts to build the outdoor kitchen of their dreams.

While outdoor living spaces are as unique as the people who create them, the centerpiece of many outdoor spaces is the grill. At Coyote Outdoor Living, they understand that grills can be as different as the cooking needs and desires of the outdoor chef that is using them. They are proud of the breadth of the product lineup of cooking equipment. Coyote offers a wide range of sizes and types of traditional grills, innovative combination fuel grills, versatile power burners and side burners, precision smokers and more.



TABLE OF CONTENTS

	Page
Features and Benefits	4
Pro-Series Grills	6
S-Series Grills	7
30" S-Series Grills and Accessories	8
36" S-Series Grills and Accessories	9
42" S-Series Grills and Accessories	10
C-Series Grills	11
28" C-Series Grills and Accessories	12
34" C-Series Grills and Accessories	13
36" C-Series Grills and Accessories	14
42" C-Series Grills and Accessories	15
Pellet Grills	16
Specialty Grills	18
Electric Grill	19
Asado Smoker and Accessories	20
36" Charcoal Grill and Accessories	21
50" Coyote Hybrid Gas Grill and Accessories	22
Complementary Products	23
Ventilation Hoods and Liners	24
Specialty Burners	25
Universal Cart	26
Access Doors	27
Warming Drawer / Combination Storage Units	28
Drawers / Storage	29
Refrigeration and Drop-in Cooler	30
Add-On Accessories	31
RTA Outdoor Living	32
Grill Islands	36
Pellet Grill Island	39
Bar Islands	40
Electric Grill Islands	41
Asado Smoker Islands	42
Dimensions and Specifications	43
Warranty and Service Information	44
Pinnacle Express, Inc. Terms and Conditions	45
Product Index	46

STOCK ITEMS ARE LISTED IN RED

FEATURES AND BENEFITS

Premium Fit and Finish:

- Premium 304 Stainless Steel Construction
- Double-walled Stainless Steel Hood
- Corrosion and Color-fade Resistant
- Ergonomic Handle
- Nickel Alloy Knobs
- Full Attention to all Finish Details

Pinnacle Express Exclusive One Year Limited Parts and Labor Warranty Included (Not Available for E-commerce Transactions)

Upgrade for \$99 to a Two Year Limited Parts and Labor Warranty Available for any Gas Grill

Limited Lifetime Warranty on the Housing and the Burner

Large Cooking Area on all Grill Models

Fuel Efficient Cast Stainless Steel Infinity Burners and Premium Grates

Warming Rack and Performance Enhancing Heat Control Grids™ - Included on all Grill Models

Interior Lights, Temperature Gauge, Electronic Ignition, and Removable Drip Tray - Included on all Models

Independent Burner Ignition

Grill Carts - Commercial Grade - Self Closing Cabinets/Drawers - Pre-assembled



FEATURES AND BENEFITS

Full Line of Competitively Priced Grill Accessories Including:

- Side Burners
- Power Burners with Optional Teppanyaki/wok
- Warming Drawers
- Access Doors
- Storage Drawers
- Combination Storage Units
- Drop-in Coolers
- Refreshment Center
- Outdoor Refrigerators
- Insulated Jackets
- Grill and Accessory Covers
- Ventilation Hoods and Liners



FEATURE COMPARISON

Features	28" C-Series	34" C-Series	36" * C-Series	42" C-Series	30" S-Series	36" * S-Series	42" * S-Series
Cooking Area (In Square Inches)	640	780	875	1,275	700	875	1,275
BTUs (Maximum)	40,000	60,000	80,000	100,000	70,000	90,000	110,000
Cast SS Infinity Burners™	2	3	4	5	2	3	4
Infrared Rear Burners	No	No	No	No	Yes	Yes	Yes
RapidSear™ Burner	No	No	No	No	Yes	Yes	Yes
Interior Hood Lights	Yes	Yes	Yes	Yes	Yes	Yes	Yes
Backlit Knobs	No	No	No	No	Yes	Yes	Yes
Rotisserie Kit Included	No	No	No	No	Yes	Yes	Yes
Smoker Box Included	No	No	No	No	Yes	Yes	Yes
Individual Electric Ignition	Yes	Yes	Yes	Yes	Yes	Yes	Yes

* Pro-Series Grills - See Page 6 for More Details

PRO-SERIES GRILLS

Pinnacle Express now offers our customers the ability to conveniently purchase select Coyote Outdoor Living premium products as a package to include the items featured below. (Not Available For E-Commerce Transactions)



PRO36B

Includes

- C-Series 36" Grill
- Grill Cover
- Ceramic Briquettes
- 2 Year Parts & Labor Warranty



PRO36SSR

Includes

- S-Series 36" Grill
- Grill Cover
- Ceramic Briquettes
- 2 Year Parts & Labor Warranty
- Signature Grates



PRO42SSR

Includes

- S-Series 42" Grill
- Grill Cover
- Ceramic Briquettes
- 2 Year Parts & Labor Warranty
- Signature Grates

MODEL	DESCRIPTION	UMRP	MSRP (Retail)
PRO36BLP	Pro-Series 36" Grill, 4 Brnr, Briq, Cvr, 2YW, LP	\$ 2,299	\$ 2,499
PRO36BNG	Pro-Series 36" Grill, 4 Brnr, Briq, Cvr, 2YW, NG	\$ 2,299	\$ 2,499
PRO36SRLP	Pro-Series 36" Grill, 3 Brnr, Sear, Rotis, LED, Briq, LCG, Cvr, 2YW, LP	\$ 2,999	\$ 3,299
PRO36SRNG	Pro-Series 36" Grill, 3 Brnr, Sear, Rotis, LED, Briq, LCG, Cvr, 2YW, NG	\$ 2,999	\$ 3,299
PRO42SRLP	Pro-Series 42" Grill, 4 Brnr, Sear, Rotis, LED, Briq, LCG, Cvr, 2YW, LP	\$ 3,599	\$ 3,999
PRO42SRNG	Pro-Series 42" Grill, 4 Brnr, Sear, Rotis, LED, Briq, LCG, Cvr, 2YW, NG	\$ 3,599	\$ 3,999



Grill Cover



Signature Grate



Ceramic Briquettes



S-SERIES GRILLS

The Coyote S-Series grills aspire to exceed the highest standards. This grill series, available in a 30", 36" or 42" size, offers various luxury items standard on every grill such as the Coyote stainless steel Infinity Burners™, a rotisserie with an infrared burner, smoker box, and RapidSear™ burners to help lock in natural juices and nutrients. Knobs backlit with LED lighting offer a great assist in nighttime cooking ... and an impressive aesthetic.

All S-Series grills fulfill the need of even the most demanding outdoor gourmet chef. Each grill features ceramic briquette heat control grids for maintaining the most precise temperature for your outdoor cooking needs.

Standard S-Series Features:

- Premium 304 stainless steel construction
- One year limited parts and labor warranty included on all grills not sold on the internet
- Continuous weld on grill box with seamless polished edging
- Double walled stainless steel hood
- Interior halogen grill lighting
- Nickel alloy knobs
- Temperature gauge and removable drip tray
- Individual electric ignition
- Interior halogen grill lighting
- Backlit LED knobs
- Coyote Cast stainless steel 20,000 BTU Infinity Burners™
- Coyote RapidSear™ infrared searing burner
- Rotisserie kit includes 15,000 BTU burner, motor, spit rod, and two spit forks
- Ceramic Briquettes for even distribution

30" S-Series Grill

- Two high performance Coyote Cast SS Infinity Burners™, one infrared rear burner, one Coyote RapidSear™ infrared burner
- 700 sq. in cooking area
- Up to 70,000 BTUs
- Regulator is included

36" S-Series Grill

- Three high performance Coyote Cast SS Infinity Burners™; one infrared rear burner; one Coyote RapidSear™ burner
- 875 sq. in. cooking area
- Up to 90,000 BTUs
- Regulator is included

42" S-Series Grill

- Four high performance Coyote Cast SS Infinity Burners™; one infrared rear burner; one Coyote RapidSear™ burner
- 1275 sq. in. cooking area
- Up to 110,000 BTUs
- Regulator is included



30" S-SERIES GRILLS



C2SL30-FS
(Cart Body Arrives Fully Assembled)



CSIGRATE15
Optional Signature Grates

30" S-Series Grill Features

- Two High Performance Coyote Cast SS Infinity Burners™; One Infrared Rear Burner; One Coyote RapidSear™ Burner
- 700 sq. in. Cooking Area
- Up to 70,000 BTUs
- Cutout Dimensions: 10.25" X 27" X 20.5"
- Overall Dimensions: 23" X 30" X 25.5"
- Regulator is Included
- Rotisserie Kit and Smoker Box Included
- Individual Electric Ignition
- Ceramic Briquette Heat Control Grids Included

30" S-Series Grills

MODEL	DESCRIPTION	UMRP	MSRP (Retail)
C2SL30LP	Coyote S-Series 30" Grill with LED Backlit Knobs - LP	\$ 2,199	\$ 2,399
C2SL30NG	Coyote S-Series 30" Grill with LED Backlit Knobs - NG	\$ 2,199	\$ 2,399
C2SL30LP-FS	Coyote S-Series 30" Grill with LED Backlit Knobs - LP - Freestanding	\$ 2,999	\$ 3,299
C2SL30NG-FS	Coyote S-Series 30" Grill with LED Backlit Knobs - NG - Freestanding	\$ 2,999	\$ 3,299

30" S-Series Accessories

MODEL	DESCRIPTION	UMRP	MSRP (Retail)
CJAKTCS30	Insulated Jacket for C2SL30	\$ 599	\$ 639
CCVR30-BI	C2SL30 Grill Cover (Grill Head Only)	\$ 75	\$ 83
CCVR30-CT	C2SL30 Grill Cover (Grill plus Cart)	\$ 129	\$ 142
CSBX	Smoker Box	\$ 59	\$ 65
C1GRDL	Heavy Duty Drop-In Griddle - See Page 28 for more details	\$ 299	\$ 329
C1CSBLP	Single Side Burner for Carts; LP	\$ 679	\$ 749
C1CSBNG	Single Side Burner for Carts; NG	\$ 679	\$ 749
C2BRIQ30	30" Ceramic Flavorizer (4 pc set) - See Page 28 for more details	\$ 279	\$ 309
C2LP2NG	Conversion Kit LP to NG	\$ 119	\$ 129
C2NG2LP	Conversion Kit NG to LP	\$ 119	\$ 129
CLPREG	LP Regulator	\$ 59	\$ 65
CNGREG	Natural Gas Regulator	\$ 69	\$ 76
CWG30	Wind Guard for 30" Grill	\$ 50	\$ 55
CSIGRATE15	Signature Grates 3 pk - 28" and 30" Grills	\$ 339	\$ 375
CCHTRAY15	Charcoal Trays 1 pk - 28" and 30" Grills - See Page 28 for more details	\$ 119	\$ 129
CINLNREG	In-line Regulator (Required for use with underground LP tank)	\$ 49	\$ 54
COYVENT	Stainless Island Vent - 2 Pack 15" X 4 1/2"	\$ 69	\$ 75
2YRWARR	2 Year Parts and Labor Warranty	\$ 99	\$ 109

STOCK ITEMS ARE LISTED IN RED

36" S-SERIES GRILLS



C2SL36 with Optional Cart
(Cart Body Arrives Fully Assembled)



CSIGRATE12
Optional Signature Grates

36" S-Series Grill Features

- Three High Performance Coyote Cast SS Infinity Burners™; One Infrared Rear Burner; One Coyote RapidSear™ Burner
- 875 sq. in. Cooking Area
- Up to 90,000 BTUs
- Cutout Dimensions: 10.25" X 32.5" X 20.5"
- Overall Dimensions: 23" X 35.5" X 25.5"
- Regulator is Included
- Rotisserie Kit and Smoker Box Included
- Individual Electric Ignition
- Ceramic Briquette Heat Control Grids Included

36" S-Series Grills

MODEL	DESCRIPTION	UMRP	MSRP (Retail)
C2SL36LP	Coyote S-Series 36" Grill with LED Backlit Knobs - LP	\$ 2,699	\$ 2,969
C2SL36NG	Coyote S-Series 36" Grill with LED Backlit Knobs - NG	\$ 2,699	\$ 2,969
C1S36CT	Cart for C1SL36 Grill	\$ 789	\$ 869

36" S-Series Accessories

MODEL	DESCRIPTION	UMRP	MSRP (Retail)
CJAKTCS36	Insulated Jacket for C2SL36	\$ 669	\$ 735
CCVR36-BI	C2SL36 Grill Cover (Grill Head Only)	\$ 75	\$ 83
CCVR36-CT	C2SL36 Grill Cover (Grill plus Cart)	\$ 129	\$ 142
CROT36	Rotisserie Kit for C2SL36	\$ 239	\$ 259
CSBX	Smoker Box	\$ 59	\$ 65
C1GRDL	Heavy Duty Drop-In Griddle - See Page 28 for more details	\$ 299	\$ 329
C1CSBLP	Single Side Burner for Carts; LP	\$ 679	\$ 749
C1CSBNG	Single Side Burner for Carts; NG	\$ 679	\$ 749
C2BRIQ36	36" Ceramic Flavorizer (4 pc set) - See Page 28 for more details	\$ 239	\$ 259
C2LP2NG	Conversion Kit LP to NG	\$ 119	\$ 129
C2NG2LP	Conversion Kit NG to LP	\$ 119	\$ 129
CLPREG	LP Regulator	\$ 59	\$ 65
CNGREG	Natural Gas Regulator	\$ 69	\$ 76
CWG36	Wind Guard for 36" Grill	\$ 53	\$ 58
CSIGRATE12	Signature Grates 3 pk - 34" and 36" Grills	\$ 339	\$ 375
CCHTRAY12	Charcoal Trays 1 pk - 34" and 36" Grills - See Page 28 for more details	\$ 119	\$ 129
CINLNREG	1/2" In-line Regulator (Required for use with underground LP tank)	\$ 49	\$ 54
COYVENT	Stainless Island Vent - 2 Pack 15" X 4 1/2"	\$ 69	\$ 75
2YRWARR	2 Year Parts and Labor Warranty	\$ 99	\$ 109

42" S-SERIES GRILLS



C2SL42 with Optional Cart
(Cart Body Arrives Fully Assembled)



CSIGRATE15
Optional Signature Grates

42" S-Series Grill Features

- Four High Performance Coyote Cast SS Infinity Burners™; One Infrared Rear Burner; One Coyote RapidSear™ Burner
- 1275 sq. in. Cooking Area
- Up to 110,000 BTUs
- Cutout Dimensions: 10.25" X 39.5" X 20.5"
- Overall Dimensions: 23" X 42.5" X 25.5"
- Regulator is Included
- Rotisserie Kit and Smoker Box Included
- Individual Electric Ignition
- Ceramic Briquette Heat Control Grids Included

42" S-Series Grills

MODEL	DESCRIPTION	UMRP	MSRP (Retail)
C2SL42LP	Coyote S-Series 42" Grill with LED Backlit Knobs - LP	\$ 3,299	\$ 3,599
C2SL42NG	Coyote S-Series 42" Grill with LED Backlit Knobs - NG	\$ 3,299	\$ 3,599
CIS42CT	Cart for C2SL42 Grill	\$ 1,049	\$ 1,149

42" S-Series Accessories

MODEL	DESCRIPTION	UMRP	MSRP (Retail)
CJAKTCS42	Insulated Jacket for C2SL42	\$ 759	\$ 835
CCVR42-BI	C2SL42 Grill Cover (Grill Head Only)	\$ 79	\$ 87
CCVR42-CT	C2SL42 Grill Cover (Grill plus Cart)	\$ 149	\$ 164
CROT42	Rotisserie Kit for C2SL42	\$ 239	\$ 259
CSBX	Smoker Box	\$ 59	\$ 65
CIGRDL	Heavy Duty Drop-In Griddle - See Page 28 for more details	\$ 299	\$ 329
C1CSBLP	Single Side Burner for Carts; LP	\$ 679	\$ 749
C1CSBNG	Single Side Burner for Carts; NG	\$ 679	\$ 749
C2BRIQ42	42" Ceramic Flavorizer (5 pc set) - See Page 28 for more details	\$ 299	\$ 329
C2LP2NG	Conversion Kit LP to NG	\$ 119	\$ 129
C2NG2LP	Conversion Kit NG to LP	\$ 119	\$ 129
CLPREG	LP Regulator	\$ 59	\$ 65
CNGREG	Natural Gas Regulator	\$ 69	\$ 76
CWG42	Wind Guard for 42" Grill	\$ 58	\$ 64
CSIGRATE15	Signature Grates 3 pk - 28" and 42" Grills	\$ 339	\$ 375
CCHTRAY15	Charcoal Trays 1 pk - 28" and 42" Grills - See Page 28 for more details	\$ 119	\$ 129
CINLNREG	In-line Regulator (Required for use with underground LP tank)	\$ 49	\$ 54
COYVENT	Stainless Island Vent - 2 Pack 15" X 4 1/2"	\$ 69	\$ 75
2YRWARR	2 Year Parts and Labor Warranty	\$ 99	\$ 109

C-SERIES GRILLS

Coyote Outdoor Living's C-Series grills are built to suit grillers of all types. Measuring a compact 28", Coyote's C1C28 model is the ideal appliance for small spaces, urban living and unparalleled convenience and portability. For homeowners with more space, Coyote's C2C36 is a terrific option, providing an ample 875 square inches of grilling space and featuring four high performance Coyote cast stainless steel Infinity Burners™. All of the C-Series grills come standard with interior lighting for day or nighttime outdoor culinary pursuits.

Standard C-Series Features:

- Premium 304 Stainless Steel Construction
- One Year Limited Parts and Labor Warranty Included on All Grills Not Sold on the Internet
- Continuous Weld on Grill Box with Seamless Polished Edging
- Double Walled Stainless Steel Hood
- Interior Hood Lights
- Nickel Alloy Knobs
- Heat Control Grids™ for Even Distribution
- Temperature Gauge and Removable Drip Tray
- Cart Bodies Arrive Fully Assembled
- Independent Burner Ignition System
- Coyote Cast SS Infinity Burners

28" C-Series Grill

- Two High Performance Coyote Cast SS Infinity Burners™
- 640 sq. in. Cooking Area
- Interior Hood Lights
- Up to 40,000 BTUs
- Regulator is Included
- Individual Electric Ignition

34" C-Series Grill

- Three High Performance Coyote Cast SS Infinity Burners™
- 780 sq. in. Cooking Area
- Interior Hood Lights
- Up to 60,000 BTUs
- Regulator is Included
- Individual Electric Ignition

36" C-Series Grill

- Four High Performance Coyote Cast SS Infinity Burners™
- 875 sq. in. of Cooking Area
- Interior Hood Lights
- Up to 80,000 BTUs
- Regulator is Included
- Individual Electric Ignition

42" C-Series Grill

- Five High Performance Coyote Cast SS Infinity Burners™
- 1275 sq.in Cooking Area
- Interior Hood Lights
- Up to 100,000 BTUs
- Regulator is Included
- Individual Electric Ignition



28" C-SERIES GRILLS



Freestanding C1C28
Arrives in One Box Pre-Assembled!

CSIGRATE15
Optional Signature Grates

28" C-Series Grill Features

- Two High Performance Coyote Cast SS Infinity Burners™
- 640 sq. in. Cooking Area
- Interior Hood Lights
- Up to 40,000 BTUs
- Cutout Dimensions: 10.25" X 25" X 20.5"
- Overall Dimensions: 23" X 28" X 25.5
- Regulator is Included
- Individual Electric Ignition

28" C-Series Grills

MODEL	DESCRIPTION	UMRP	MSRP (Retail)
C1C28LP	Coyote C-Series 28" Grill - 2 SS Infinity Burners, LP	\$ 1,199	\$ 1,299
C1C28NG	Coyote C-Series 28" Grill - 2 SS Infinity Burners, NG	\$ 1,199	\$ 1,299
C1C28LP-FS	Coyote C-Series 28" Grill with Cart - 2 SS Burners, LP	\$ 1,399	\$ 1,549
C1C28NG-FS	Coyote C-Series 28" Grill with Cart - 2 SS Burners, NG	\$ 1,399	\$ 1,549

28" C-Series Accessories

MODEL	DESCRIPTION	UMRP	MSRP (Retail)
CJAKTCC2	Insulated Jacket for C1C28	\$ 579	\$ 639
CCVR2-BI	C1C28 Grill Cover (Grill Head Only)	\$ 69	\$ 75
CCVR2-CT	C1C28 Grill Cover (Grill plus Cart)	\$ 109	\$ 119
CROTC2	Rotisserie Kit for C1C28, Motor bracket (C0000016 Sold Separately)	\$ 239	\$ 259
C0000016	Motor bracket for Rotisserie, C and S Series Grills	\$ 9	\$ 10
CSBX	Smoker Box	\$ 59	\$ 65
C1CSBLP	Single Side Burner for Carts; LP	\$ 679	\$ 749
C1CSBNG	Single Side Burner for Carts; NG	\$ 679	\$ 749
C1GRDL	Heavy Duty Drop-In Griddle - See Page 28 for more details	\$ 299	\$ 329
CBRIQ28	28" Ceramic Flavorizer (2 pc set) - See Page 28 for more details	\$ 119	\$ 129
C128LP2NG	C1C28 Conversion Kit LP to NG	\$ 119	\$ 129
C128NG2LP	C1C28 Conversion Kit NG to LP	\$ 119	\$ 129
CLPREG	LP Regulator	\$ 59	\$ 65
CNGREG	Natural Gas Regulator	\$ 69	\$ 76
C1WG28	Wind Guard for 28" Grill	\$ 49	\$ 54
CSIGRATE15	Signature Grates 3 pk - 28" and 42" Grills	\$ 339	\$ 375
CCHTRAY15	Charcoal Trays 1 pc - 28" and 42" Grills - See Page 28 for more details	\$ 119	\$ 129
CINLNREG	1/2" In-line Regulator (Required for use with underground LP tank)	\$ 49	\$ 54
COYVENT	Stainless Island Vent - 2 Pack 15" X 4 1/2"	\$ 69	\$ 75
2YRWARR	2 Year Parts and Labor Warranty	\$ 99	\$ 109

STOCK ITEMS ARE LISTED IN RED

34" C-SERIES GRILLS



C2C34 with Optional Cart
(Cart Body Arrives Fully Assembled)

CSIGRATE12
Optional Signature Grates

34" C-Series Grill Features

- Three High Performance Coyote Cast SS Infinity Burners™
- 780 sq. in. Cooking Area
- Interior Hood Lights
- Up to 60,000 BTUs
- Cutout Dimensions: 10.25" X 31" X 20.5"
- Overall Dimensions: 23" X 34" X 25.5"
- Regulator is Included
- Individual Electric Ignition

34" C-Series Grills

MODEL	DESCRIPTION	UMRP	MSRP (Retail)
C2C34LP	Coyote C-Series 34" Grill - 3 SS Infinity Burners, LP	\$ 1,699	\$ 1,869
C2C34NG	Coyote C-Series 34" Grill - 3 SS Infinity Burners, NG	\$ 1,699	\$ 1,869
C1C34CT	Cart for C2C34 34" Grill	\$ 719	\$ 789

34" C-Series Accessories

MODEL	DESCRIPTION	UMRP	MSRP (Retail)
CJAKTCC3	Insulated Jacket for C2C34	\$ 649	\$ 715
CCVR3-BI	C2C34 Grill Cover (Grill Head Only)	\$ 75	\$ 83
CCVR3-CT	C2C34 Grill Cover (Grill plus Cart)	\$ 129	\$ 142
CROTC2	Rotisserie Kit for C1C28, Motor bracket (C0000016 Sold Separately)	\$ 239	\$ 259
C0000016	Motor bracket for Rotisserie, C and S Series Grills	\$ 9	\$ 10
CROTC3	Rotisserie Kit for C2C34	\$ 239	\$ 259
CSBX	Smoker Box	\$ 59	\$ 65
C1CSBLP	Single Side Burner for Carts; LP	\$ 679	\$ 749
C1CSBNG	Single Side Burner for Carts; NG	\$ 679	\$ 749
C1GRDL	Heavy Duty Drop-In Griddle - See Page 28 for more details	\$ 299	\$ 329
CBRIQ34	34" Ceramic Flavorizer (3 pc set) - See Page 28 for more details	\$ 159	\$ 175
C2LP2NG	Conversion Kit LP to NG	\$ 119	\$ 129
C2NG2LP	Conversion Kit NG to LP	\$ 119	\$ 129
CLPREG	LP Regulator	\$ 59	\$ 65
CNGREG	Natural Gas Regulator	\$ 69	\$ 76
CWG34	Wind Guard for 34" Grill	\$ 51	\$ 56
CSIGRATE12	Signature Grates 3 pk - 34" and 36" Grills	\$ 339	\$ 375
CCHTRAY12	Charcoal Trays 1 pk - 34" and 36" Grills - See Page 28 for more details	\$ 119	\$ 129
CINLNREG	1/2" In-line Regulator (Required for use with underground LP tank)	\$ 49	\$ 54
COYVENT	Stainless Island Vent - 2 Pack 15" X 4 1/2"	\$ 69	\$ 75
2YRWARR	2 Year Parts and Labor Warranty	\$ 99	\$ 109

36" C-SERIES GRILLS



C2C36 with Optional Cart
(Cart Body Arrives Fully Assembled)

CSIGRATE12
Optional Signature Grates

36" C-Series Grill Features

- Four High Performance Coyote Cast SS Infinity Burners™
- 875 sq. in. of Cooking Area
- Interior Hood Lights
- Up to 80,000 BTU
- Cutout Dimensions: 10.25" x 32.5" x 20.5"
- Overall Dimensions: 23" x 35.5" x 25.5"
- Regulator is Included
- Individual Electric Ignition

36" C-Series Grills

MODEL	DESCRIPTION	UMRP	MSRP (Retail)
C2C36LP	Coyote C-Series 36" Grill - 4 SS Coyote Infinity Burners, LP	\$ 1,999	\$ 2,199
C2C36NG	Coyote C-Series 36" Grill - 4 SS Coyote Infinity Burners, NG	\$ 1,999	\$ 2,199
CIS36CT	Cart for C1C36	\$ 789	\$ 869

36" C-Series Accessories

MODEL	DESCRIPTION	UMRP	MSRP (Retail)
CJAKTCS36	Insulated Jacket for C2C36	\$ 669	\$ 735
CCVR36-BI	C2C36 Grill Cover (Grill Head Only)	\$ 75	\$ 83
CCVR36-CT	C2C36 Grill Cover (Grill plus Cart)	\$ 129	\$ 142
CROTC2	Rotisserie Kit for C1C28, Motor bracket (C0000016 Sold Separately)	\$ 239	\$ 259
C0000016	Motor bracket for Rotisserie, C and S Series Grills	\$ 9	\$ 10
CROT36	Rotisserie Kit for C2C36	\$ 239	\$ 259
CSBX	Smoker Box	\$ 59	\$ 65
C1CSBLP	Single Side Burner for Carts; LP	\$ 679	\$ 749
C1CSBNG	Single Side Burner for Carts; NG	\$ 679	\$ 749
C1GRDL	Heavy Duty Drop-In Griddle - See Page 28 for more details	\$ 299	\$ 329
C2BRIQ36	Ceramic Flavorizer, 36" (4pc set) - See Page 28 for more details	\$ 239	\$ 259
C2LP2NG	Conversion Kit LP to NG	\$ 119	\$ 129
C2NG2LP	Conversion Kit NG to LP	\$ 119	\$ 129
CLPREG	LP Regulator	\$ 59	\$ 65
CNGREG	Natural Gas Regulator	\$ 69	\$ 76
CWG36	Wind Guard for 36" Grill	\$ 53	\$ 58
CSIGRATE12	Signature Grates 3 pk - 34" and 36" Grills	\$ 339	\$ 375
CCHTRAY12	Charcoal Trays 1 pk - 34" and 36" Grills - See Page 28 for more details	\$ 119	\$ 129
CINLNREG	1/2" In-line Regulator (Required for use with underground LP tank)	\$ 49	\$ 54
COYVENT	Stainless Island Vent - 2 Pack 15" X 4 1/2"	\$ 69	\$ 75
2YRWARR	2 Year Parts and Labor Warranty	\$ 99	\$ 109

STOCK ITEMS ARE LISTED IN RED

42" C-SERIES GRILLS



C2C42 with Optional Cart
(Cart Body Arrives Fully Assembled)

CSIGRATE15
Optional Signature Grates

42" C-Series Grill Features

- Five High Performance Coyote Cast SS Infinity Burners™
- 1,275 sq. in. of Cooking Area
- Interior Hood Lights
- Up to 100,000 BTUs
- Cutout Dimensions: 10.25" x 39.5" x 20.5"
- Overall Dimensions: 23" x 42.5" x 25.5"
- Regulator is Included
- Individual Electric Ignition

42" C-Series Grills

MODEL	DESCRIPTION	UMRP	MSRP (Retail)
C2C42LP	Coyote C-Series 42" Grill - 4 SS Coyote Infinity Burners, LP	\$ 2,199	\$ 2,399
C2C42NG	Coyote C-Series 42" Grill - 4 SS Coyote Infinity Burners, NG	\$ 2,199	\$ 2,399
CIS42CT	Cart for C1C42	\$ 1,049	\$ 1,149

42" C-Series Accessories

MODEL	DESCRIPTION	UMRP	MSRP (Retail)
CJAKTCS42	Insulated Jacket for C2C42	\$ 759	\$ 835
CCVR42-BI	C2C42 Grill Cover (Grill Head Only)	\$ 79	\$ 87
CCVR42-CT	C2C42 Grill Cover (Grill plus Cart)	\$ 149	\$ 164
CROTC2	Rotisserie Kit for C1C28, Motor bracket (C0000016 Sold Separately)	\$ 239	\$ 259
C0000016	Motor bracket for Rotisserie, C and S Series Grills	\$ 9	\$ 10
CROT42	Rotisserie Kit for C2C42	\$ 239	\$ 259
CSBX	Smoker Box	\$ 59	\$ 65
C1CSBLP	Single Side Burner for Carts; LP	\$ 679	\$ 749
C1CSBNG	Single Side Burner for Carts; NG	\$ 679	\$ 749
C1GRDL	Heavy Duty Drop-In Griddle - See Page 28 for more details	\$ 299	\$ 329
C2BRIQ42	Ceramic Flavorizer, 42" (5pc set) - See Page 28 for more details	\$ 299	\$ 329
C2LP2NG	Conversion Kit LP to NG	\$ 119	\$ 129
C2NG2LP	Conversion Kit NG to LP	\$ 119	\$ 129
CLPREG	LP Regulator	\$ 59	\$ 65
CNGREG	Natural Gas Regulator	\$ 69	\$ 76
CWG42	Wind Guard for 42" Grill	\$ 58	\$ 64
CSIGRATE15	Signature Grates 3 pk - 28" and 42" Grills	\$ 339	\$ 375
CCHTRAY15	Charcoal Trays 1 pk - 28" and 42" Grills - See Page 28 for more details	\$ 119	\$ 129
CINLNREG	1/2" In-line Regulator (Required for use with underground LP tank)	\$ 49	\$ 54
COYVENT	Stainless Island Vent - 2 Pack 15" X 4 1/2"	\$ 69	\$ 75
2YRWARR	2 Year Parts and Labor Warranty	\$ 99	\$ 109

PELLET GRILLS

The Coyote Pellet Grill heralds the next generation of outdoor cooking with the look, versatility and superior functionality of a luxury indoor appliance. The state-of-the-art digital touch screen, three food temperature probes as well as a range of even heat settings, allows you to utilize this high-end outdoor grill in a similar fashion to an indoor oven. Coyote's green, smart drop pellet system can be used with any flavored wood pellet to further enhance the outdoor entertaining experience. Design is in the details and this robust grill includes a spring assisted hood that can be lifted with a touch of a finger. The Coyote Pellet Grill is available as a built in or fully assembled on a cart.

Pellet Grill Features:

- Intuitive digital touch control
- Dual fan, auger, drip tray
- Smart drop™ pellet feed
- Front loading pellet hopper
- Spring assist hood
- Double walled, gasket-lined canopy
- Versa-Rack™ included for multiple grilling levels
- 304 Stainless steel
- Interior grill lighting
- LED light for temperature probes
- Laser cut grates
- Built-in timer
- 3 food temperature probes included
- Electric power ignition
- Built-in wind guard
- Individual smoke & sear grate included
- Hopper capacity: 12 - 15 lbs
- Temperature Range: 175°F - 700°F



STOCK ITEMS ARE LISTED IN RED

THE PELLET GRILL



FEATURES

- Built-in and Freestanding Cart Models
- 304 Premium Stainless Steel Construction
- Digital Touch Control
- Dual Fan / Dual Auger / Dual Drip Tray
- Smart Drop Technology
- Preassembled Freestanding Carts
- Electric Power - 120 Volt
- Spring Assisted Hood
- 3-in-1 VersaRack
- Laser Cut Grates
- Built-In Timer
- Temperature Ranges:
28" - 175° - 650°F
36" - 175° - 700°F
- Smoke, Grill or Sear Functions
- 3 Food Probes Included



Sealed Storage Drawer

PRODUCT

MODEL	DESCRIPTION	MAP	MSRP
C1P28	28" Pellet Built-In Grill	\$ 2,299	\$ 2,529
C1P36	36" Pellet Built-In Grill	\$ 2,999	\$ 3,299
C1P28-FS	28" Pellet Cart Grill	\$ 2,699	\$ 2,969
C1P36-FS	36" Pellet Cart Grill	\$ 3,599	\$ 3,959

OPTIONAL ACCESSORIES

MODEL	DESCRIPTION	MAP	MSRP
CSSD28	28" Single Sealed Storage Drawer	\$ 599	\$ 659
CSSD36	36" Single Sealed Storage Drawer	\$ 699	\$ 769
CCVR28P-BI	28" Built-In Pellet Grill Cover	\$ 79	\$ 87
CCVR36P-BI	36" Built-In Pellet Grill Cover	\$ 89	\$ 98
CCVR2-CT	28" Cart Pellet Grill Cover	\$ 109	\$ 119
CCVR36-CT	36" Cart Pellet Grill Cover	\$ 129	\$ 142
CJAKTC1P28	28" Pellet Grill Insulated Jacket	\$ 649	\$ 714
CJAKTC1P36	36" Pellet Grill Insulated Jacket	\$ 769	\$ 849
CBIR-R	Outdoor Built-In Refrigerator - 21" - Right Hinge	\$ 1,199	\$ 1,319
CBIR-L	Outdoor Built-In Refrigerator - 21" - Left Hinge	\$ 1,199	\$ 1,319
CJAKTC1P28	28" Pellet Grill Insulated Jacket	\$ 649	\$ 714
CJAKTC1P36	36" Pellet Grill Insulated Jacket	\$ 769	\$ 849

Inventory levels are subject to change, check stock via Dealer Login on www.pinnaclesexpress.com

SPECIALTY GRILLS

The kitchen is a place for culinary exploration, and an outdoor kitchen should be no different. Outdoor cooking has moved beyond traditional hotdog and hamburger fare. With Coyote Outdoor Living's assortment of specialty grilling appliances you can create a unique kitchen full of options or one focused to suit your specific cooking style or specialty.

Electric Grill Features:

- Premium 304 stainless steel construction
- Three years limited warranty on electric and plastic components
- 156 sq. in cooking area
- 5,000 hour heating
- Teflon coated cooking surface
- Ceramic flavorizer
- 550° maximum temperature
- 60 minute safety timer with surge protector
- Removable frame for built-in application

Asado Smoker Features:

- Coyote Signature Smoking Grate™
- Heat-resistant ceramic construction
- 254 sq. in. of cooking area
- Adjustable venting to maintain precise cooking temperatures
- Smoke, sear, grill option
- Optional cart with side shelves
- Universal Cart Option

Hybrid Grill Features:

- Premium 304 stainless steel construction
- One year limited parts and labor warranty included on all grills
- Continuous weld on grill box with seamless polished edging
- Double walled stainless steel hood
- Interior hood lights
- Nickel alloy knobs
- Heat Control Grids™ for even distribution
- Temperature gauge and removable drip tray
- Individual electric ignition on hybrid grill

Charcoal Grill Features:

- Premium 304 stainless steel construction
- One year limited parts and labor warranty included on all grills
- Continuous weld on grill box with seamless polished edging
- Double walled stainless steel hood
- Interior hood lights
- Nickel alloy knobs
- Heat Control Grids™ for even distribution
- Temperature gauge and removable drip tray
- Adjustable fuel tray
- Adjustable dampers for controlling air flow



STOCK ITEMS ARE LISTED IN RED

ELECTRIC GRILL



**C1EL120SM with
Optional Pedestal Stand**

C2ELISL

Electric Grill Features

- Premium 304 Stainless Steel Construction
- Three Years Limited Warranty on Electric and Plastic Components
- 156 sq. in Cooking Area
- 5,000 Hour Heating
- Teflon Coated Cooking Surface
- Cut Out Dimensions: 3.375" X 16" X 15"
- Overall Dimensions: 11.375" X 18.125" X 16.25"
- Ceramic Flavorizer
- 550° Maximum Temperature
- 60 Minute Safety Timer with Surge Protector
- Removable Frame for Built-in Application
- Cover and Two Piece Tool Set Included

C2ELISL Features

- Premium 304 Stainless Steel Construction
- Cart Comes with Black Powder Coated Top
- Propane Tank Holder within Vented Cabinet
- Side Shelves

Electric Grills

MODEL	DESCRIPTION	UMRP	MSRP (Retail)
C1EL120SM	120 V Single Burner Electric Grill	\$ 799	\$ 879
C1ELCT21	Stainless Steel Pedestal for Electric Grill	\$ 249	\$ 269
C2ELISL	Electric Grill Island	\$ 1,199	\$ 1,299

ASADO SMOKER AND ACCESSORIES



C1CHCS - FS Includes Side Shelves and Cart
(Not fully assembled)



C2UNCT
with Asado Smoker

Asado Smoker Features

- Coyote Signature Smoking Grate
- Heat-Resistant Ceramic Construction
- 254 sq. in. of Cooking Surface
- Smoke, Sear, Grill Option
- Adjustable Venting to Maintain Precise Cooking Temperatures
- Optional Cart with Side Shelves Available

C2UNCT Features

- Premium 304 Stainless Steel Construction
- Cart Comes with Black Powder Coated Top
- Propane Tank Holder within Vented Cabinet
- Side Shelves

Asado Smoker

MODEL	DESCRIPTION	UMRP	MSRP (Retail)
C1CHCS	Asado Smoker, Built-In	\$ 999	\$ 1,099
C1CHCS-FS	Asado Smoker with Stand and Side Shelves	\$ 1,249	\$ 1,369
C1CHCS-CT	Cart for Asado Smoker	\$ 319	\$ 349
C2UNCT	Universal Cart for C1CHCS	\$ 1,499	\$ 1,649

Asado Smoker Accessories

MODEL	DESCRIPTION	UMRP	MSRP (Retail)
ASADO-PS	Pizza Stone	\$ 54	\$ 59
ASADO-HD	Asado Heat Deflector	\$ 65	\$ 72
ASADO-CT	Chicken Throne	\$ 43	\$ 47
ASADO-GG	Grid Grippers	\$ 32	\$ 35
ASADO-CVR	Asado Cover	\$ 65	\$ 72
ASADO-ACC	Asado Accessory Bundle (Includes All Five Pieces Pictured Below)	\$ 219	\$ 239
CLMP	20lb Hardwood Lump Charcoal	\$ 29	\$ 32



ASADO-PS



ASADO-HD



ASADO-CT



ASADO-GG



ASADO-CVR



ASADO-ACC

36" CHARCOAL GRILL AND ACCESSORIES



Charcoal Grill Features

- Adjustable Fuel Tray
- Fuel Tray Rests on Drawer That Pulls Out for Easy Access to Charcoal
- Over 875 sq. in. of Grilling Surface
- Cut Out Dimensions: 12.5" X 32.5" X 20.5"
- Overall Dimensions: 25.25" X 35.5" X 25.5"
- For Use with Charcoal or Wood Chips
- Adjustable Dampers for Controlling Air Flow

Charcoal Grills

MODEL	DESCRIPTION	UMRP	MSRP (Retail)
C1CH36	36" Charcoal Grill Built-in	\$ 2,099	\$ 2,299
C1CH36CT	Cart for 36" Charcoal Grill	\$ 789	\$ 869

Charcoal Grill Accessories

MODEL	DESCRIPTION	UMRP	MSRP (Retail)
CCVR36-BI	C1CH36 Grill Cover (Grill Head Only)	\$ 75	\$ 83
CCVR36-CT	C1CH36 Grill Cover (Grill Plus Cart)	\$ 129	\$ 142
CROT36	Rotisserie Kit for C1CH36	\$ 239	\$ 259
CSBX	Smoker Box	\$ 59	\$ 65
CLMP	20lb Hardwood Lump Charcoal	\$ 29	\$ 32
C1GRDL	Heavy Duty Drop-In Griddle - See Page 28 for more details	\$ 299	\$ 329
COYVENT	Stainless Island Vent - 2 Pack 15" X 4 1/2"	\$ 69	\$ 75
2YRWARR	2 Year Parts and Labor Warranty	\$ 99	\$ 109

50" COYOTE HYBRID GAS GRILL AND ACCESSORIES



C1HY50 with Optional Cart
(Cart Body arrives fully assembled)

Hybrid Grill Features

- 2 high performance Coyote I- Burners™
- Over 600 sq. in. of grilling surface on each side
- Up to 40,000 BTUs on the gas side
- Adjustable fuel tray for cooking flexibility
- For use with charcoal or wood chips
- Regulator is Included
- Adjustable dampers for controlling air flow

Hybrid Grills

MODEL	DESCRIPTION	UMRP	MSRP (Retail)
C1HY50LP	Coyote 50" Hybrid Grill - LP	\$ 3,599	\$ 3,949
C1HY50NG	Coyote 50" Hybrid Grill - NG	\$ 3,599	\$ 3,949
C1HY50CT	Cart for C1HY50 Hybrid Grill	\$ 1,119	\$ 1,229

Hybrid Grill Accessories

MODEL	DESCRIPTION	UMRP	MSRP (Retail)
CCVR50-BI	C1HY50 Grill Cover (Grill Head Only)	\$ 89	\$ 98
CCRV50-CT	C1HY50 Grill Cover (Grill Plus Cart)	\$ 159	\$ 175
CSBX	Smoker Box	\$ 59	\$ 65
C1GRDL	Heavy Duty Drop-In Griddle - See Page 28 for more details	\$ 299	\$ 329
C136LP2NG	Conversion Kit LP to NG	\$ 119	\$ 129
C136NG2LP	Conversion Kit NG to LP	\$ 119	\$ 129
CBRIQ50	50" Ceramic Flavorizer (2 pc set) - See Page 28 for more details	\$ 119	\$ 129
CLMP	20lb Hardwood Lump Charcoal	\$ 29	\$ 32
CLPREG	LP Regulator	\$ 59	\$ 65
CNGREG	Natural Gas Regulator	\$ 69	\$ 76
CINLNREG	In-Line Regulator (Required for use with underground LP tank)	\$ 49	\$ 54
CWG36	Wind Guard for 36" Grill	\$ 53	\$ 58
COYVENT	Stainless Island Vent - 2 Pack 15" X 4 1/2"	\$ 69	\$ 75
2YRWARR	2 Year Parts and Labor Warranty	\$ 99	\$ 109

STOCK ITEMS ARE LISTED IN RED

COMPLEMENTARY PRODUCTS

Now you can make cooking on your Coyote grill even more enjoyable with innovative accessories meant to enrich your outdoor cooking experience. In true form to their passion, Coyote Outdoor Living has created accessories from drop-in griddles to revolutionary charcoal tray inserts that combine the best of both worlds in a single grill box.



CDIC - Drop In Cooler



CBIR Outdoor Refrigerator



C1PB Power Burner

**Shown with optional CTEP teppanyaki accessory*

HOODS AND LINERS



Inside View of Hood and Liner

HOODS AND LINERS

- 304" Stainless Steel
- Horizontal Grain
- 30" Deep for Outdoor Installation
- 1 Year Warranty on Blower
- 3 Year Warranty on Stainless Steel
- Baffle Filters
- Variable Speed Control
- Two Halogen Lights
- Must Order CIBLOW1200

MODEL	DESCRIPTION		UMRP	MSRP (Retail)
C1HOOD36	36" Wide x 30" Deep Chimney Ventilation Hood	NEW	\$ 1,560	\$ 1,699
C1HOOD42	42" Wide x 30" Deep Chimney Ventilation Hood	NEW	\$ 1,770	\$ 1,949
C1HOOD48	48" Wide x 30" Deep Chimney Ventilation Hood	NEW	\$ 2,028	\$ 2,229
CIBLOW1200	1200 CFM Blower	NEW	\$ 573	\$ 629

MODEL	DESCRIPTION		UMRP	MSRP (Retail)
C1LINER36	34" Wide x 28" Deep Liner	NEW	\$ 1,446	\$ 1,599
C1LINER42	40" Wide x 28" Deep Liner	NEW	\$ 1,629	\$ 1,799
C1LINER48	46" Wide x 28" Deep Liner	NEW	\$ 1,770	\$ 1,949
CIBLOW1200	1200 CFM Blower	NEW	\$ 573	\$ 629

MODEL	DESCRIPTION	CEILING HEIGHT		UMRP	MSRP (Retail)
C1FLUE8	Low Flue Duct Cover	8' - 8' 6"	NEW	\$ 336	\$ 369
C1FLUE10	Medium Flue Duct Cover	8' 6" - 9' 8"	NEW	\$ 399	\$ 439
C1FLUE12	High Flue Duct Cover	9' 8" - 12'	NEW	\$ 579	\$ 639

STOCK ITEMS ARE LISTED IN RED

SPECIALTY BURNERS



C1SB - Single Side Burner

- (1) 15,000 BTU Brass Burner
- 304 Grade Stainless Steel Lid Included
- Cutout: 10.25" X 10.125" X 13.625"
- Overall: 13" X 11.375" X 17"
- Regulator is Included
- Individual Electric Ignition



C1DB - Dual Side Burner

- (2) 15,000 BTU Brass Burners
- 304 Grade Stainless Steel Lid Included
- Cutout: 10.25" X 11.875" x 20.25"
- Overall: 13" X 13.125" X 23.25"
- Regulator is Included
- Individual Electric Ignition

Side Burners And Accessories

MODEL	DESCRIPTION	UMRP	MSRP (Retail)
C1SBLP	Single Side Burner, LP	\$ 509	\$ 559
C1SBNG	Single Side Burner, NG	\$ 509	\$ 559
C1CSBLP	Single Side Burner for Carts, LP	\$ 679	\$ 749
C1CSBNG	Single Side Burner for Carts, NG	\$ 679	\$ 749
CCVRSB-BI	Cover for C1SB	\$ 49	\$ 54
CCVRDB-BI	Cover for C1DB	\$ 49	\$ 54
CJAKTC1SB	Insulated Jacket for Single Side Burner	\$ 359	\$ 395
CJAKTC1DB	Insulated Jacket for Double Side Burner	\$ 399	\$ 439
C1DBLP	Dual Side Burner, LP	\$ 769	\$ 849
C1DBNG	Dual Side Burner, NG	\$ 769	\$ 849
CINLNREG	In-Line Regulator (Required for use with underground LP tank)	\$ 49	\$ 54
COYVENT	Stainless Steel Island Vent - 2 Pack - 15" X 4 1/2"	\$ 69	\$ 75
2YRWARR	2 Year Parts and Labor Warranty	\$ 99	\$ 109



C1PB - POWER BURNER

- Dual-valve Burner with up to 60,000 BTU Output
- Simmer Performance at 1,000 BTU
- 304 Grade S/S Lid Included
- Teppanyaki/wok Optional
- Cutout - 10.25" X 21" x 21"
- Overall - 13" X 24" x 24.25"
- Regulator is Included
- Individual Electric Ignition



C2UNCT - UNIVERSAL CART

- Premium 304 Stainless Steel Construction
- Cart Comes with All Components Needed to Install C1PB
- Propane Tank Holder within Vented Cabinet
- Side Shelves

Power Burners And Accessories

MODEL	DESCRIPTION	UMRP	MSRP (Retail)
C1PBLP	Power Burner, LP	\$ 1,199	\$ 1,299
C1PBNG	Power Burner, NG	\$ 1,199	\$ 1,299
C2UNCT	Universal Cart for C1PB	\$ 1,499	\$ 1,649
CJAKTC1PB	Insulated Jacket for Power Burner	\$ 369	\$ 405
CTEP	Teppanyaki Accessory	\$ 449	\$ 495
CWOK	Wok for Power Burner	\$ 119	\$ 129
CCVRPB-BI	Cover For C1PB	\$ 59	\$ 65
CINLNREG	In-Line Regulator (Required for use with underground LP tank)	\$ 49	\$ 54
COYVENT	Stainless Steel Island Vent - 2 Pack - 15" X 4 1/2"	\$ 69	\$ 75
2YRWARR	2 Year Parts and Labor Warranty	\$ 99	\$ 109

UNIVERSAL CART



Universal Cart

- Premium 304 Stainless Steel Construction
- Cart Comes with All Components Needed to Install C1PB, C1CHCS, CRC*
- Propane Tank Holder within Vented Cabinet
- Side Shelves
- 30" Overall Width
- Includes Drop-in Cooler with Drain
- Removable Condiment Tray Insert for Drop-in Cooler
- Convenient Bottle Shelf, Towel Holder and Bottle Opener
- Cutting Board Accessory for Sink

* C1PB = Power Burner, C1CHCS = Asado Smoker, CRC = Refreshment Center

MODEL	DESCRIPTION	UMRP	MSRP (Retail)
C2UNCT	Universal Cart For C1PB, C1CHC2, CRC	\$ 1,499	\$ 1,649

STOCK ITEMS ARE LISTED IN RED

ACCESS DOORS



**Single Access Door
CSA2014**

- 20"H x 14"W Hinge Side Access Door



**Single Access Door
CSA1420**

- 14"H x 20"W Hinge Side Access Door



**Single Access Door
CSA2417**

- 24"H x 17"W Hinge Side Access Door



**Single Access Door
CSA1724**

- 17"H x 24"W Hinge Side Access Door



**Double Access Door
CDA2426**

- Integrated Door Handles
- Magnetic Latches for Easy Closing
- 24"H x 26"W



**Double Access Door
CDA2431**

- Paper Towel Holder Inside Door
- Integrated Door Handles
- Magnetic Latches for Easy Closing
- 24"H x 31"W



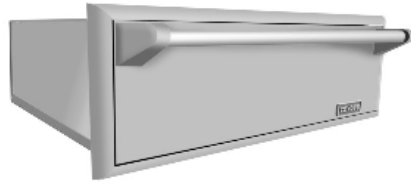
**Double Access Door
CDA2439**

- Paper Towel Holder Inside Door
- Integrated Door Handles
- Magnetic Latches For Easy Closing
- 24"H x 39"W

Access Doors

MODEL	DESCRIPTION	UMRP	MSRP (Retail)
CSA2014	Single Access Door 20" x 14"	\$ 219	\$ 239
CSA1420	Single Access Door 14" x 20"	\$ 219	\$ 239
CSA2417	Single Access Door 24" x 17"	\$ 259	\$ 285
CSA1724	Single Access Door 17" x 24"	\$ 259	\$ 285
CDA2426	Double Access Door - 26"	\$ 289	\$ 319
CDA2431	Double Access Door - 31"	\$ 329	\$ 359
CDA2439	Double Access Door - 39"	\$ 359	\$ 395

DRAWERS AND STORAGE



CWD - Warming Drawer

- Premium 304 Grade Stainless Steel Construction
- Outdoor-rated ETL Certified
- Internal Electric Heating Element
- 30" Overall Width

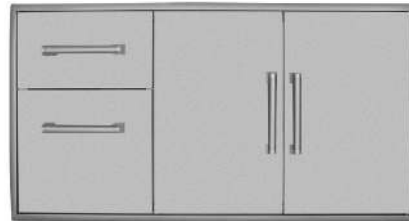
WARMING DRAWER

MODEL	DESCRIPTION	UMRP	MSRP (Retail)
CWD	Warming Drawer	\$ 1,399	\$ 1,539
2YRWARR	2 Year Parts and Labor Warranty	\$ 99	\$ 109



COMBO DRAWERS CCD-POD

- Pull Out Drawer Plus Double Access Doors



COMBO DRAWERS CCD-2DC

- Two Drawer Cabinet Plus Double Access Doors



COMBO DRAWERS CCD-WD

- Warming Drawer, Storage Drawer Plus Single Access Door



COMBO DRAWERS CCD-2DC31

- Two Drawer Cabinet Plus Single Access Doors



SINGLE TRASH OR RECYCLE CSTC

- 304 Stainless Steel Construction
- Holds One 13 Gallon Trash Can
- Comes with Trash Cans
- Can Hold up to 30 lbs



PULL OUT TRASH AND RECYCLE CTC

- 304 Stainless Steel Construction
- Holds Two 13 Gallon Trash Cans
- Comes with Trash Cans
- Can Hold Up to 60 lbs

Combination Storage Solutions

MODEL	DESCRIPTION	UMRP	MSRP (Retail)
CCD-POD	Combo Drawer - Pull Out LP Tank and Double Door	\$ 659	\$ 729
CCD-2DC	Combo Drawer - 2 Drawer Cabinet and Double Door	\$ 789	\$ 869
CCD-WD	Combo Drawer - Warming Drawer, Storage Drawer, Single Access Door	\$ 1,699	\$ 1,869
CCD-2DC31	Combo Drawer 31" - 2 Drawer Cab and Single Door	\$ 749	\$ 825
CSTC	Single Trash or Recycle Center	\$ 459	\$ 499
CTC	Pull Out Trash and Recycle	\$ 619	\$ 679

STOCK ITEMS ARE LISTED IN RED

DRAWERS AND STORAGE



**31" DRY PANTRY
CDPC31**

- Premium 304 Stainless Steel Construction
- Fully Enclosed Cabinet
- Gasket Seal for Weather-proofing
- Adjustable Shelf
- Removable Drawers



**Paper Towel Holder
CPTH**

- Convenient and Easy to Install



**Single Storage Drawer
with Shelf CSSD**

- Easy Open Drawer
- Additional Shelf Space within Drawer
- Large Storage Space



**Two-Drawer
Cabinet
C2DC**

- Easy Open Drawers
- Large Storage Space within Each Drawer



**Three-Drawer
Cabinet
C3DC**

- Extended Drawers on Rollers Facilitate Smooth Operation
- Rigid Welded-construction to Ensure Strength and Longevity
- Professional-style Door Handles



**LP Pullout Drawer
CPOD**

- Extendable Drawers on Rollers
- Interior of Drawer Includes Cut-out to Secure Tank
- Can be Used to Hold a Garbage Can
- Professional-style Door Handle



Closed

Open

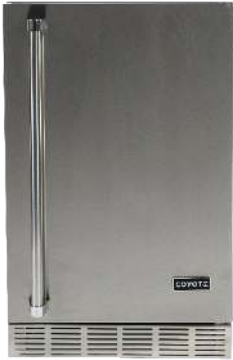
**Spice Rack
CSPRK**

- Premium 304 Stainless Steel Construction
- Pull-Out Drawer
- Includes two shelves for storing spices

Drawers / Storage

MODEL	DESCRIPTION	UMRP	MSRP (Retail)
CDPC31	Dry Pantry 31" - 2 Drawer Cab and Single Door	\$ 999	\$ 1,099
CPTH	Paper Towel Holder	\$ 139	\$ 149
CSSD	Single Storage Drawer	\$ 559	\$ 619
C2DC	2 Drawer Cabinet	\$ 529	\$ 579
C3DC	3 Drawer Cabinet	\$ 569	\$ 629
CPOD	Pull Out Drawer (Trash or LP Tank Drawer)	\$ 379	\$ 419
CSPRK	Spice Rack	\$ 399	\$ 439

REFRIGERATION AND DROP-IN COOLER



**OUTDOOR REFRIGERATOR
CBIR (L or R)**

- Premium 304 Stainless Steel Construction
- Outdoor Rated, Free-standing Refrigerator
- Automatic Defrost
- Stainless Steel Exterior, White Interior
- Capacity of 4.1 Cubic Feet
- Interior Light and Adjustable Thermostat
- Front Vented for Built-in Application
- Left or Right Hinge Swing
- Trim Kit Available



**OUTDOOR REFRIGERATOR
C1BIR24 (L or R)**

- Premium 304 Stainless Steel Construction
- Outdoor Rated, Free-standing with Lock
- Automatic Defrost
- Stainless Steel Cabinet Construction; Graphite Interior
- Capacity of 5.5 Cubic Feet
- Interior Light and Adjustable Digital Thermostat
- Front Vented for Built-in Application
- Hidden Left or Right Hinge Swing
- Trim Kit Available



**DROP-IN COOLER
CDIC**

- Premium 304 Stainless Steel Construction
- Stainless Steel Hinged Lid with High Quality Lid Seal
- Fully Insulated
- Holds Cans and/or Bottles
- Drain Hole Included
- Beveled Trim



**PULL OUT ICE CHEST
CPOC**

- Premium 304 Stainless Steel Construction
- Fully Insulated
- Beveled Trim

Complementary Products

MODEL	DESCRIPTION	UMRP	MSRP (Retail)
CBIR-R	Outdoor Built-In Refrigerator, 21" - Right Hinge	\$ 1,199	\$ 1,319
CBIR-L	Outdoor Built-In Refrigerator, 21" - Left Hinge	\$ 1,199	\$ 1,319
C1BIR24-L	Outdoor Built-In Refrigerator, 24" - Left Hinge	\$ 1,599	\$ 1,759
C1BIR24-R	Outdoor Built-In Refrigerator, 24" - Right Hinge	\$ 1,599	\$ 1,759
CDIC	Drop In Cooler	\$ 449	\$ 495
CPOC	Pull Out Ice Chest	\$ 799	\$ 879
CBIR21TK	21" Refrigerator Trim Kit	NEW \$ 79	\$ 87
C1BIR24TK	24" Refrigerator Trim Kit	NEW \$ 103	\$ 113

STOCK ITEMS ARE LISTED IN RED

ADD-ON ACCESSORIES



**REFRESHMENT CENTER
CRC**

- Premium 304 Stainless Steel Construction
- 30" Overall Width
- Includes Drop-in Cooler with Drain
- Removable Condiment Tray Insert for Drop-in Cooler
- Convenient Bottle Shelf, Towel Holder and Bottle Opener
- Cutting Board Accessory for Sink
- Optional Universal Cart



**GRIDDLE
C1GRDL**

- Premium 304 Stainless Steel Construction
- Removable Grease Trap
- Use in Place of Grates



**SINK
C1SINK1618**

- Premium 304 Stainless Steel Construction
- Universal Mount
- Drain Included



**CHARCOAL TRAY
CCHTRAY12/15**

- Premium 304 Stainless Steel Construction
- Tray Fits 28" and 42" (CCHTRAY15) and 34" and 36" (CCHTRAY12) Grills



**CERAMIC FLAVORIZER
CBRIQ28/34/36/42/50**

- Premium 304 Stainless Steel Construction
- Available in 28", 34", 36", 42" and 50"

Complementary Products

MODEL	DESCRIPTION	UMRP	MSRP (Retail)
CRC	Refreshment Center with Sink, Faucet, and Drop-In Cooler	\$ 1,299	\$ 1,429
C2UNCT	Universal Cart for CRC	\$ 1,499	\$ 1,649
C1GRDL	Heavy-Duty Drop-In Griddle, 2016 Models	\$ 299	\$ 329
C1SINK1618	Sink - Universal Mount (no faucet)	\$ 339	\$ 369
CCHTRAY12	Charcoal Trays 1 pk - 34" and 36" grills	\$ 119	\$ 129
CCHTRAY15	Charcoal Trays 1 pk - 28" and 42" grills	\$ 119	\$ 129
CBRIQ28	28" Ceramic Flavorizer (2 pc set)	\$ 119	\$ 129
CBRIQ34	34" Ceramic Flavorizer (3 pc set)	\$ 159	\$ 175
C2BRIQ36	36" Ceramic Flavorizer (4 pc set)	\$ 239	\$ 259
C2BRIQ42	42" Ceramic Flavorizer (5 pc set)	\$ 299	\$ 329
CBRIQ50	50" Ceramic Flavorizer (2 pc set)	\$ 119	\$ 129

RTA OUTDOOR LIVING

Changing the Outdoor Space

RTA Outdoor Living set out to remove the challenges associated with selecting, designing, and building outdoor kitchens by creating a one-supplier source. This has been accomplished through a strategic partnership with Coyote Outdoor Living and the manufacturing of an easy and affordable alternative to conventional outdoor kitchen construction while maintaining a higher quality.

Given the fast pace of the modern world, we need a place to unwind and reconnect with those who matter most. We want others to be able to create their own space, easily and affordable, for their family to share for years to come.



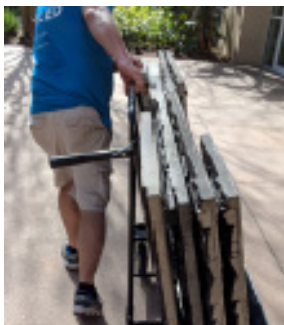
SIMPLE CONSTRUCTION

Ready-To-Assemble

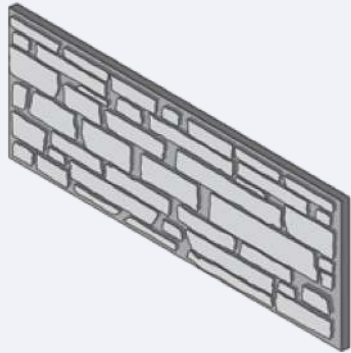
RTA Outdoor Living has simplified the construction process by using structural high-strength concrete panels (precast with a stone, wood or concrete face) that can be assembled in a few hours with a couple of people. In comparison, scratch-built and ready-to-finish (rtf) outdoor kitchens require multiple materials, steps, and trades to complete.



RTA panels are self-supporting and aesthetic with no finish or masonry work required. Panels are simply set in place, attached with L-brackets and self tapping screws, corners are mounted, countertop and appliance are installed, and your kitchen is complete.

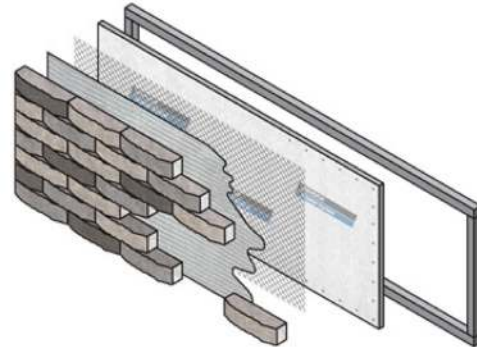


RTA ADVANTAGE



RTA SYSTEM

- Built of 1 solid concrete-composite panel
- Panels are the structure, nothing to rot, rust, or decay
- Panel material is engineered specifically for the outdoor environment
- No masonry skilled labor needed for finishing
- Installed in hours with light construction skills (Countertops included)
- Limited lifetime structural warranty



RTF SYSTEM

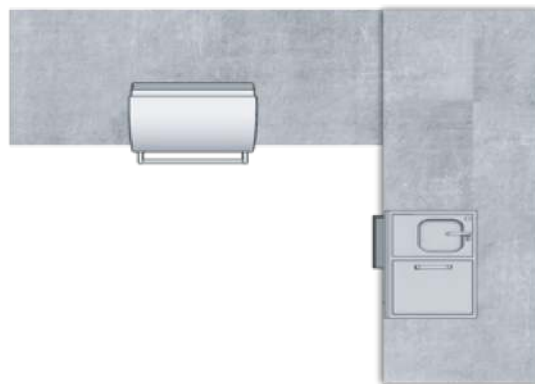
- Final product is built of 4 - 5 layers
- Aluminum or galvanized steel frame is vulnerable to movement and corrosion
- Concrete board substrate is often not rated for outdoors
- Requires experienced masonry labor for finishing
- Installed in a few days to a week or more (Countertops not included)
- Warranty varies / warranty on finish up to the installer



KITCHEN LAYOUT OPTIONS

L-Shaped Kitchens

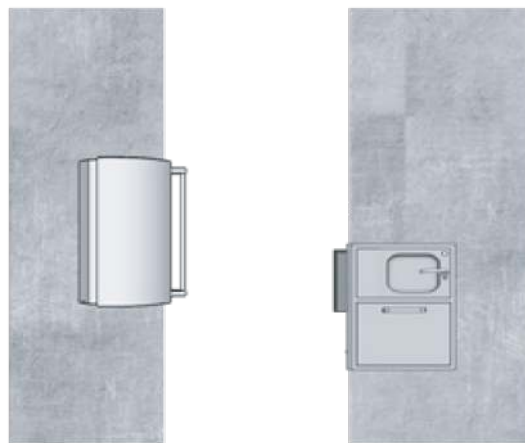
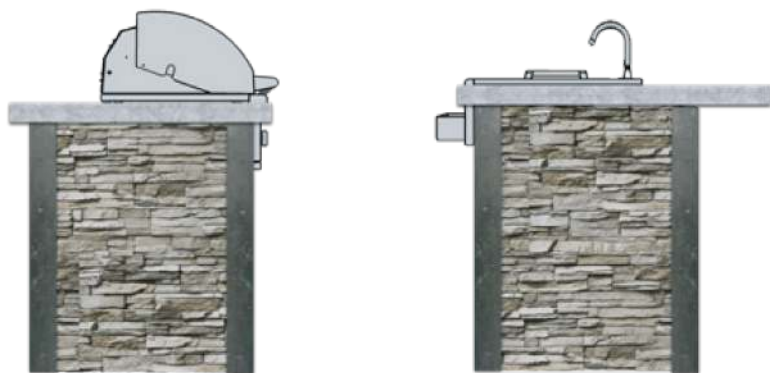
L-Shaped outdoor kitchens offer the utility of a BBQ island with the added space for bar seating and additional appliance features. L-Shape kitchens are perfect for those who have the outdoor space to accommodate and the desire to entertain. An L-shaped kitchen can be created by combining any one of our G-Series islands with any one of our 3 B-Series Island options, allowing you to customize your L-Shaped outdoor kitchen.



(Shown in right hand configuration)

Galley Kitchens

The Galley Kitchen is another popular configuration option for a G-Series and B-Series island, providing an efficient cooking, preparation, and entertaining layout by positioning both islands parallel to each other. This option also gives you more flexibility in your layout overall.



FINISHING OPTIONS

Panel Options



Stacked Stone | Stone Gray
Includes gray picture-frame corners and a distressed gray countertop.



Stacked Stone | Brown Terra
Includes brown picture-frame corners and a taupe countertop.



Stacked Stone | Modern White
Includes white picture-frame corners and an off white countertop.



Weathered Wood | Stone Gray
Includes gray picture-frame corners and a distressed gray countertop.



Weathered Wood | Brown Terra
Includes brown picture-frame corners and a taupe countertop.



Modern Concrete
Only available for the Electric Grill Island



NEW 2020 White Brick



NEW 2020 Modern Concrete White

Panel Options

All panel profiles are available in two distinct color palette options. A Brown Terra palette and a Gray Stone palette allowing you to match any landscape or urban environment.



Brown Terra



Gray Stone

Countertops

Our signature 2" chiseled edge countertop is available in gray scale or taupe.



Off White



Distressed Gray



Taupe

- Brown Terra Panel comes with Taupe Countertop
- Gray Stone Panel comes with Gray Countertop

Clean Edge Upgrade

1.25" Clean Edge Countertop Made from UHPC



G-SERIES GRILL ISLANDS



RTAC-G4 - 4' Island Only

Pre-Cut For:

- 28" Coyote C-Series Grill (C1C28)
- 20" Single Access Door (CSA1420)
- Island Structure: 48"w x 30"d x 36"h

MODEL	DESCRIPTION	Finish	Color		MSRP (Retail)
RTAC-G4-SG	4ft Grill Island Only	Stacked Stone	Gray	NEW	\$ 2,291
RTAC-G4-SB	4ft Grill Island Only	Stacked Stone	Brown	NEW	\$ 2,291
RTAC-G4-SW	4ft Grill Island Only	Stacked Stone	White	NEW	\$ 2,291
RTAC-G4-WG	4ft Grill Island Only	Weathered Wood	Gray	NEW	\$ 2,291
RTAC-G4-WB	4ft Grill Island Only	Weathered Wood	Brown	NEW	\$ 2,291
RTAC-G4-BR	4ft Grill Island Only	Brick	White	NEW	\$ 2,291

** Must order C1C28 and CSA1420 to complete island*



RTAC-G5 - 5' Island Only

Pre-Cut For:

- 28" Coyote C-Series Grill (C1C28)
- 26" double access door (CDA2426)
- Island Structure: 60"w x 30"d x 36"h

MODEL	DESCRIPTION	Finish	Color		MSRP (Retail)
RTAC-G5-SG	5ft Grill Island Only	Stacked Stone	Gray	NEW	\$ 3,451
RTAC-G5-SB	5ft Grill Island Only	Stacked Stone	Brown	NEW	\$ 3,451
RTAC-G5-SW	5ft Grill Island Only	Stacked Stone	White	NEW	\$ 3,451
RTAC-G5-WG	5ft Grill Island Only	Weathered Wood	Gray	NEW	\$ 3,451
RTAC-G5-WB	5ft Grill Island Only	Weathered Wood	Brown	NEW	\$ 3,451
RTAC-G5-BR	5ft Grill Island Only	Brick	White	NEW	\$ 3,451

** Must order C1C28 and CDA2426 to complete island*

STOCK ITEMS ARE LISTED IN RED

G-SERIES GRILL ISLANDS

NEW



PACKAGE PRICE
\$6,039

RTAC-G6 - 6' Island Only

Pre-Cut For:

- 34" Coyote C-Series Grill (C2C34)
- 31" double access door (CDA2431)
- Island Structure: 72"w x 30"d x 36"h
- Optional drop-in cooler or sink

MODEL	DESCRIPTION	Finish	Color	MSRP (Retail)
RTAC-G6-SG	6ft Grill Island Only	Stacked Stone	Gray	NEW \$ 4,011
RTAC-G6-SB	6ft Grill Island Only	Stacked Stone	Brown	NEW \$ 4,011
RTAC-G6-SW	6ft Grill Island Only	Stacked Stone	White	NEW \$ 4,011
RTAC-G6-WG	6ft Grill Island Only	Weathered Wood	Gray	NEW \$ 4,011
RTAC-G6-WB	6ft Grill Island Only	Weathered Wood	Brown	NEW \$ 4,011
RTAC-G6-BR	6ft Grill Island Only	Brick	White	NEW \$ 4,011

** Must order C2C34 and CDA2431 to complete island*

G-SERIES GRILL ISLANDS

NEW



PACKAGE PRICE
\$7,738

RTAC-G6P - 6' Island Only

Pre-Cut For:

- 30" Coyote S-Series Grill (C2SL30)
- 31" double access door (CDA2431)
- 21" Coyote Outdoor Refrigerator (CBIR)
- Island Structure: 72"w x 30"d x 36"h
- Optional drop-in cooler or sink

MODEL	DESCRIPTION	Finish	Color	MSRP (Retail)
RTAC-G6-P-SG	6ft Grill Island Only	Stacked Stone	Gray	NEW \$ 4,011
RTAC-G6-P-SB	6ft Grill Island Only	Stacked Stone	Brown	NEW \$ 4,011
RTAC-G6-P-SW	6ft Grill Island Only	Stacked Stone	White	NEW \$ 4,011
RTAC-G6-P-WG	6ft Grill Island Only	Weathered Wood	Gray	NEW \$ 4,011
RTAC-G6-P-WB	6ft Grill Island Only	Weathered Wood	Brown	NEW \$ 4,011
RTAC-G6-P-BR	6ft Grill Island Only	Brick	White	NEW \$ 4,011

** Must order C2C34 and CDA2431 to complete island*



PACKAGE PRICE
C-SERIES:
\$8,599
S-SERIES:
\$9,299

RTAC-G8 - 8' Island Only

Pre-Cut For:

- 36" Coyote C-Series Grill (C2C36 or C2SL36)
- 31" double access door, pull-out trash center and 21" refrigerator (CDA2431, CSTC, CBIR)
- Island Structure: 96"w x 30"d x 36"h

MODEL	DESCRIPTION	Finish	Color	MSRP (Retail)
RTAC-G8-SG	8ft Grill Island Only	Stacked Stone	Gray	NEW \$ 4,613
RTAC-G8-SB	8ft Grill Island Only	Stacked Stone	Brown	NEW \$ 4,613
RTAC-G8-SW	8ft Grill Island Only	Stacked Stone	White	NEW \$ 4,613
RTAC-G8-WG	8ft Grill Island Only	Weathered Wood	Gray	NEW \$ 4,613
RTAC-G8-WB	8ft Grill Island Only	Weathered Wood	Brown	NEW \$ 4,613
RTAC-G8-BR	8ft Grill Island Only	Brick	White	NEW \$ 4,613

** Must order C2C36 or C2SL36, and CDA2431, CSTC and CBIR to complete island*

STOCK ITEMS ARE LISTED IN RED

PELLET GRILL ISLANDS



PACKAGE PRICE
\$8,108

RTAC-G6PW - 6' Island Only

Pre-Cut For:

- 28" Coyote Pellet Grill (C1P28)
- 28" Coyote Sealed Storage Drawer (CSSD28)
- 21" Outdoor Refrigerator (CBIR)
- Island Structure: 72"w x 30"d x 36"h

MODEL	DESCRIPTION	FINISH	COLOR	MSRP (Retail)
RTAC-G6PW-SG	6ft Pellet Grill Island Only	Stacked Stone	Gray	\$ 4,011
RTAC-G6PW-SB	6ft Pellet Grill Island Only	Stacked Stone	Brown	\$ 4,011
RTAC-G6PW-SW	6ft Pellet Grill Island Only	Stacked Stone	White	\$ 4,011
RTAC-G6PW-WG	6ft Pellet Grill Island Only	Weathered Wood	Gray	\$ 4,011
RTAC-G6PW-WB	6ft Pellet Grill Island Only	Weathered Wood	Brown	\$ 4,011
RTAC-G6PW-MG	6ft Pellet Grill Island Only	Modern Concrete	Gray	\$ 4,011
RTAC-G6PW-BR	6ft Pellet Grill Island Only	Brick	White	\$ 4,011

* Must Order C1P28, CSSD28, CBIR-R to complete island.



PACKAGE PRICE
\$9,510

RTAC-G8W - 8' Island Only

Pre-Cut For:

- 36" Coyote Pellet Grill (C1P36)
- 36" Coyote Sealed Storage Drawer (CSSD36)
- 21" Outdoor Refrigerator (CBIR)
- Island Structure: 96"w x 30"d x 36"h

MODEL	DESCRIPTION	FINISH	COLOR	MSRP (Retail)
RTAC-G8W-SG	8ft Pellet Grill Island Only	Stacked Stone	Gray	\$ 4,613
RTAC-G8W-SB	8ft Pellet Grill Island Only	Stacked Stone	Brown	\$ 4,613
RTAC-G8W-SW	8ft Pellet Grill Island Only	Stacked Stone	White	\$ 4,613
RTAC-G8W-WG	8ft Pellet Grill Island Only	Weathered Wood	Gray	\$ 4,613
RTAC-G8W-WB	8ft Pellet Grill Island Only	Weathered Wood	Brown	\$ 4,613
RTAC-G8W-MG	8ft Pellet Grill Island Only	Modern Concrete	Gray	\$ 4,613
RTAC-G8W-BR	8ft Pellet Grill Island Only	Brick	White	\$ 4,613

* Must Order C1P36, CSSD36, CBIR-R to complete island.

B-SERIES BAR ISLANDS



PACKAGE PRICE
\$5,099

RTAC-B8-S Bar Island Only

Pre-Cut For:

- 8' of seating space
- 39" bar height with 10" overhang in back
- 31" single-access door with double pull-out drawers (CCD-2DC31)
- **Must choose left or right configuration**

MODEL	DESCRIPTION	Finish	Color		MSRP (Retail)
RTAC-B8-S(L/R)-SG	8ft Bar Island Only - Storage	Stacked Stone	Gray	NEW	\$ 4,350
RTAC-B8-S(L/R)-SB	8ft Bar Island Only - Storage	Stacked Stone	Brown	NEW	\$ 4,350
RTAC-B8-S(L/R)-SW	8ft Bar Island Only - Storage	Stacked Stone	White	NEW	\$ 4,350
RTAC-B8-S(L/R)-WG	8ft Bar Island Only - Storage	Weathered Wood	Gray	NEW	\$ 4,350
RTAC-B8-S(L/R)-WB	8ft Bar Island Only - Storage	Weathered Wood	Brown	NEW	\$ 4,350
RTAC-B8-S(L/R)-BR	8ft Bar Island Only - Storage	Brick	White	NEW	\$ 4,350

** Must order CCD-2DC31 to complete island*



PACKAGE PRICE
\$6,099

RTAC-B8-F Bar Island Only

Pre-Cut For:

- 8' of seating space
- 39" bar height with 10" overhang in back
- Premium 24" outdoor rated 304 stainless steel refrigerator providing 5.5 cubic feet of cooling capacity (C1BIR24)
- **Must choose left or right configuration**

MODEL	DESCRIPTION	Finish	Color		MSRP (Retail)
RTAC-B8-F(L/R)-SG	8ft Bar Island Only - Refrigerator	Stacked Stone	Gray	NEW	\$ 4,500
RTAC-B8-F(L/R)-SB	8ft Bar Island Only - Refrigerator	Stacked Stone	Brown	NEW	\$ 4,500
RTAC-B8-F(L/R)-SW	8ft Bar Island Only - Refrigerator	Stacked Stone	White	NEW	\$ 4,500
RTAC-B8-F(L/R)-WG	8ft Bar Island Only - Refrigerator	Weathered Wood	Gray	NEW	\$ 4,500
RTAC-B8-F(L/R)-WB	8ft Bar Island Only - Refrigerator	Weathered Wood	Brown	NEW	\$ 4,500
RTAC-B8-F(L/R)-BR	8ft Bar Island Only - Refrigerator	Brick	White	NEW	\$ 4,500

** Must order C1BIR24 to complete island*



PACKAGE PRICE
\$6,119

RTAC-B8-R Bar Island Only

Pre-Cut For:

- 8' of seating space
- 39" bar height with 10" overhang in back
- Refreshment center with an overall width of 30" (CRC)
- Features sink, drop-in cooler, bottle shelf, and more
- 17" single access door (CSA1724)
- **Must choose left or right configuration**

MODEL	DESCRIPTION	Finish	Color		MSRP (Retail)
RTAC-B8-R(L/R)-SG	8ft Bar Island Only - Refreshment	Stacked Stone	Gray	NEW	\$ 4,561
RTAC-B8-R(L/R)-SB	8ft Bar Island Only - Refreshment	Stacked Stone	Brown	NEW	\$ 4,561
RTAC-B8-R(L/R)-SW	8ft Bar Island Only - Refreshment	Stacked Stone	White	NEW	\$ 4,561
RTAC-B8-R(L/R)-WG	8ft Bar Island Only - Refreshment	Weathered Wood	Gray	NEW	\$ 4,561
RTAC-B8-R(L/R)-WB	8ft Bar Island Only - Refreshment	Weathered Wood	Brown	NEW	\$ 4,561
RTAC-B8-R(L/R)-BR	8ft Bar Island Only - Refreshment	Brick	White	NEW	\$ 4,561

** Must order CRC and CSA1724 to complete island*

STOCK ITEMS ARE LISTED IN RED

ELECTRIC GRILL ISLANDS



(Shown with refrigerator option)



RTAC-E3 Electric Grill Island Only

Pre-Cut For:

- 32" Wide x 24" Deep X 39" Tall engineered stone base which comes standard with a 2" thick 38" x 38" modern concrete countertop
- Electric grill with 5,000 hour heating element, 304 stainless construction, Teflon coated cooking surface, ceramic flavorizer, & 550 F° maximum temperature (C1EL120SM)
- 21" Outdoor rated; UL certified; DOE certified refrigerator with digital thermostat control and a 4.1 cubic foot capacity (CBIR)
- Storage Option comes with cutout for 24" Single Access Door (CSA2417)

RTAC-E3S Electric Grill Island

MODEL	DESCRIPTION	Finish	Color	MSRP (Retail)
RTAC-E3S-CG	3ft Electric Island Only Storage	Modern Concrete	Gray	NEW \$ 2,101
RTAC-E3S-CW	3ft Electric Island Only Storage	Modern Concrete	White	NEW \$ 2,101
RTAC-E3S-SG	3ft Electric Island Only Storage	Stacked Stone	Gray	NEW \$ 2,101
RTAC-E3S-SB	3ft Electric Island Only Storage	Stacked Stone	Brown	NEW \$ 2,101
RTAC-E3S-SW	3ft Electric Island Only Storage	Stacked Stone	White	NEW \$ 2,101

* Must order C1EL120SM and CSA2417 to complete island

RTAC-E3F Electric Grill Island

MODEL	DESCRIPTION	Finish	Color	MSRP (Retail)
RTAC-E3F-CG	3ft Electric Island Only Refrigerator	Modern Concrete	Gray	NEW \$ 2,101
RTAC-E3F-CW	3ft Electric Island Only Refrigerator	Modern Concrete	White	NEW \$ 2,101
RTAC-E3F-SG	3ft Electric Island Only Refrigerator	Stacked Stone	Gray	NEW \$ 2,101
RTAC-E3F-SB	3ft Electric Island Only Refrigerator	Stacked Stone	Brown	NEW \$ 2,101
RTAC-E3F-SW	3ft Electric Island Only Refrigerator	Stacked Stone	White	NEW \$ 2,101

* Must order C1EL120SM and CBIR to complete island

ASADO SMOKER ISLANDS

NEW



PACKAGE PRICE
\$1,999

RTAC-K3 ASADO SMOKER ISLAND ONLY

Pre-Cut For:

- Smoker, Sear & Grill Option
- Heat-resistant ceramic construction
- 254in² of Cooking Area
- Can be added to any G-Series or B-Series island

MODEL	DESCRIPTION	Finish	Color	MSRP (Retail)
RTAC-K3-SG	3ft Kamado Stand Only	Stacked Stone	Gray	\$ 1,000
RTAC-K3-SB	3ft Kamado Stand Only	Stacked Stone	Brown	NEW \$ 1,000
RTAC-K3-SW	3ft Kamado Stand Only	Stacked Stone	White	NEW \$ 1,000
RTAC-K3-WG	3ft Kamado Stand Only	Weathered Wood	Gray	NEW \$ 1,000
RTAC-K3-WB	3ft Kamado Stand Only	Weathered Wood	Brown	NEW \$ 1,000
RTAC-K3-BR	3ft Kamado Stand Only	Brick	White	NEW \$ 1,000

** Must order C1CHCS to complete island*



STOCK ITEMS ARE LISTED IN RED

DIMENSIONS AND SPECIFICATIONS

Model	Product Description	Cutout Dimensions			Overall Dimensions			Total BTU Ratings		Electrical Requirements
		Height	Width	Depth	Height	Width	Depth	LP	NG	
Grills										
		Height	Width	Depth	Height	Width	Depth	LP	NG	120 VAC
C1C28	28" Grill w/ Hood Lights	10 1/4"	25"	20 1/2"	23"	28"	25 1/2"	40,000	40,000	Qty 1
C2C34	34" Grill w/ Hood Lights	10 1/4"	31"	20 1/2"	23"	34"	25 1/2"	60,000	60,000	Qty 1
C2C36	36" Grill w/ Hood Lights	10 1/4"	32 1/2"	20 1/2"	23"	35 1/2"	25 1/2"	80,000	80,000	Qty 1
C2C42	42" Grill w/ Hood Lights	10 1/4"	39 1/2"	20 1/2"	23"	42 1/2"	25 1/2"	100,000	100,000	Qty 1
C1S36	36" Grill w/ Hood Lights	10 1/4"	32 1/2"	20 1/2"	23"	35 1/2"	25 1/2"	90,000	90,000	Qty 1
C2SL30	30" Grill w/ Hood & LED Lights	10 1/4"	27"	20 1/2"	23"	30"	25 1/2"	70,000	70,000	Qty 1
C2SL36	36" Grill w/ Hood & LED Lights	10 1/4"	32 1/2"	20 1/2"	23"	35 1/2"	25 1/2"	90,000	90,000	Qty 1
C2SL42	42" Grill w/ Hood & LED Lights	10 1/4"	39 1/2"	20 1/2"	23"	42 1/2"	25 1/2"	110,000	110,000	Qty 1
C1HY50	50" Hybrid Grill w/ Hood Lights	12 1/2"	47 3/4"	20 1/2"	25 1/4"	50"	25 1/2"	40,000	40,000	Qty 1
C1CH36	36" Charcoal Grill	12 1/2"	32 1/2"	20 1/2"	25 1/4"	35 1/2"	25 1/2"	N/A	N/A	Qty 1
C1CHCS	Asado Smoker	17"	22 1/2"	22 1/2"	34"	22 1/4"	22 1/4"	N/A	N/A	None
C1EL120SM	Electric Grill Manual Control	3 3/8"	16"	15"	11 3/8"	18 1/8"	16 1/4"	120V 1300W 11A		Qty 1
Side Burners										
		Height	Width	Depth	Height	Width	Depth	LP	NG	120 VAC
C1SB	Coyote Single Side Burner	10 1/4"	10 1/8"	13 5/8"	13"	11 3/8"	17"	15,000	15,000	None
C1DB	Coyote Dual Side Burner	10 1/4"	11 7/8"	20 1/4"	13"	13 1/8"	23 1/4"	30,000	30,000	None
C1PB	Coyote Power Burner	10 1/4"	21"	21"	13"	24"	24 1/4"	60,000	60,000	None
Insulated Jackets										
		Height	Width	Depth	Height	Width	Depth	Notes		
CJAKTCC2	Insulated Jacket for 28" Grills	11"	28 1/4"	22 1/8"	11"	30 1/8"	23"	For Combustible Construction		
CJAKTCC3	Insulated Jacket for 34" Grills	11"	34 1/4"	22 1/8"	11"	36 1/8"	23"	For Combustible Construction		
CJAKTCS30	Insulated Jacket for 30" Grills	11"	30 3/4"	22 1/8"	11"	32 3/8"	23"	For Combustible Construction		
CJAKTCS36	Insulated Jacket for 36" Grills	11"	35 3/4"	22 1/8"	11"	37 5/8"	23"	For Combustible Construction		
CJAKTCS42	Insulated Jacket for 42" Grills	11"	42 1/4"	22 1/8"	11"	44 1/8"	23"	For Combustible Construction		
CJAKTCS1B	Insulated Jacket for C1SB	11"	13 3/4"	16"	11"	15 1/4"	16 3/4"	For Combustible Construction		
CJAKTCS1DB	Insulated Jacket for C1DB	11"	15 1/2"	22 1/4"	11"	17"	23"	For Combustible Construction		
CJAKTCS1PB	Insulated Jacket for C1PB	11"	22 1/8"	21 7/8"	11"	24 7/8"	22 3/4"	For Combustible Construction		
Access Doors										
		Height	Width	Depth	Height	Width	Depth	Notes		
CDA2426	26" Double Access Door	20 1/2"	20 3/4"	1"	24"	24 1/4"	3"	N/A		
CDA2431	31" Double Access Door	20 1/2"	26 1/2"	1"	24"	30"	3"	N/A		
CDA2439	39" Double Access Door	20 1/2"	34 1/2"	1"	24"	38"	3"	N/A		
CSA2014	Single Access Door 20" x 14"	20 1/2"	14 1/2"	1"	22"	16"	3"	N/A		
CSA1420	Single Access Door 14" x 20"	14 1/2"	20 1/2"	1"	16"	22"	3"	N/A		
CSA2417	Single Access Door 24" x 17"	24 1/2"	17 1/2"	1"	26"	19"	3"	N/A		
CSA1724	Single Access Door 17" x 24"	17 1/2"	24 1/2"	1"	19"	26"	3"	N/A		
Drawers										
		Height	Width	Depth	Height	Width	Depth	Notes		
C2DC	2 Drawer Cabinet	20 1/2"	14 1/2"	17 1/2"	22"	16 1/4"	18"	N/A		
C3DC	3 Drawer Cabinet	24 1/2"	16 3/4"	17 1/4"	26"	18 1/2"	18"	N/A		
CSSD	Single Storage Drawer	13 1/2"	31 1/2"	20 1/2"	15"	32 1/2"	21 1/4"	N/A		
CDPC31	31" Dry Pantry	20 1/2"	26 1/2"	23"	24"	30"	24"	N/A		
CTC	Dual Pull Out Trash & Recycle	24"	24"	18"	26 1/4"	26 3/4"	19"	N/A		
CSTC	Single Pull Out Trash & Recycle	23 7/8"	11 3/8"	18"	26 1/4"	14 3/8"	18 7/8"	N/A		
CPOD	LP Tank or Trash Drawer	20 1/2"	14 1/4"	17 1/2"	22"	15 1/2"	18"	N/A		
CPTH	Paper Towel Holder	8 1/4"	13 1/2"	8"	10"	15"	9"	N/A		
CWD	Warming Drawer	9 1/2"	28 1/4"	23 1/2"	10 3/4"	29 1/2"	26 3/4"	N/A		
Combo Drawers										
		Height	Width	Depth	Height	Width	Depth	Notes		
CCD-2DC	Double Drawer Combo	20 1/4"	43 3/8"	17 1/8"	24 1/8"	45 1/4"	18 3/8"	N/A		
CCD-2DC31	31" Double Drawer Combo	20 1/2"	26 1/2"	20 1/8"	24"	30"	21 1/8"	N/A		
CCD-POD	Pull Out Drawer Combo	20 3/8"	43 3/8"	17 1/2"	24 1/8"	45 1/4"	18"	N/A		
CCD-WD	Warming Drawer Combo	19 1/2"	40 5/8"	25 1/4"	20 3/4"	42 1/8"	26 1/2"	Qty 1 Plug Needed - unit is 450 Watt		
Refrigeration & Refreshment Centers										
		Height	Width	Depth	Height	Width	Depth	Notes		
CBIR	4.1 Outdoor Refrigerator	34"	20 3/4"	23"	33 3/4"	20 1/2"	22 3/4"	Qty 1 Plug Needed - Vented Bottom Front		
C1BIR24	5.5 Outdoor Refrigerator	33 1/4"	23 3/4"	22 3/4"	33"	23 1/2"	22 1/2"	Qty 1 Plug Needed - Vented Bottom Front		
CDIC	Drop In Cooler	12"	23 1/4"	17 1/4"	15"	24 1/2"	18"	Can be turned in either direction		
CPOC	Pull Out Ice Chest	17 1/2"	23 3/4"	24 3/4"	20 1/2"	26 3/4"	25 1/2"	N/A		
C1SINK1618	Sink - Universal Mount	13"	14 3/4"	17 1/8"	13"	15 3/4"	17 3/4"	Includes drain but no faucet		
CRC	Refreshment Center	10"	29 1/4"	22 3/4"	10 3/4"	30 1/4"	29"	Drain Hose Included		

* Pro-Series Grills
 C2C36 = PRO36B
 C2SL36 = PRO36SSR
 C2SL42 = PRO42SSR

WARRANTY AND SERVICE INFORMATION

PINNACLE EXPRESS LIMITED WARRANTY

Pinnacle Express, Inc. offers a Limited Parts and Labor Warranty at no charge on all Outdoor Gas Grills and Side Burners to the original purchaser at the original site of delivery with proof of purchase from a Pinnacle Express, Inc. authorized dealer based on normal residential use. This Warranty specifically *EXCLUDES ANY PRODUCT USED IN RENTAL OR COMMERCIAL APPLICATIONS AND ANY GRILL PURCHASED THROUGH AN INTERNET DEALER*. This Warranty may be extended for one (1) additional year with the purchase of 2YRWARR, described in the Price Book as a Two Year Limited Parts and Labor Warranty. If purchased, 2YRWARR will provide a homeowner with a full 24 months of coverage from the date of purchase.

Pinnacle Express, Inc.'s obligation under this Warranty is limited to repair or replacement of product, at Pinnacle Express's option in collaboration with Coyote Outdoor Living, during the warranty period. This Warranty does not cover normal wear of parts or damage resulting from any of the following: negligent use or misuse of the product, use of improper fuel/gas supply, use contrary to operating instructions, or alteration by any person other than a factory authorized service center. The warranty period is only from the date of original purchase and is not extended by any repair or replacement.

Pinnacle Express One Year Limited Parts and Labor Warranty No Charge
Pinnacle Express Two Year Limited Parts and Labor Warranty \$99

Please contact your Pinnacle Express Representative for any questions you may have.

LIMITED WARRANTY

Coyote Outdoor warrants to the original purchaser at the original site of delivery with proof of purchase of each outdoor gas grill/side burner or electric grill that when subject to normal residential use, it is free from defects in workmanship and materials for the periods specified below. This warranty excludes grills used in rental and commercial applications. This warranty excludes surface corrosion, scratches, and discoloration which may occur during regular use. The Coyote Outdoor Warranty does NOT cover labor or labor related charges. There may be a shipping and handling charge for the delivery of the warranty part(s).

COMPONENT WARRANTY PERIOD

	Gas Products	Electric Grill
Cooking Grids (no rust or burn through)	5 years (limited)	5 years (limited)
Flavorizer Bars (no rust or burn through)	2 years (limited)	3 years (limited)
Electric/Plastic Components	2 years (limited)	3 years (limited)
Ignition Systems/Valves	1 year (limited)	3 year (limited)
Stainless Steel Frame/Housing	Limited Lifetime	Limited Lifetime
Stainless Steel Burners (no rust or burn through)	Limited Lifetime	N/A

Our obligation under this warranty is limited to repair or replacement, at Coyote's option, of the product during the warranty period. The extent of any liability of Coyote under this warranty is limited to repair or replacement. This warranty does not cover normal wear of parts or damage resulting from any of the following: negligent use or misuse of the product, use of improper fuel/gas or electric supply, as applicable, use contrary to operating instructions, or alteration by any person other than a factory service center. The warranty period is not extended by such repair or replacement.

WARRANTY CLAIM PROCEDURE:

If you require service or parts for your Coyote Grill, please contact the Warranty Service Center for factory direct assistance. Hours of operation are 8 am to 4 pm CST. The phone number is 855.520.1559 and the fax number is 214.520.1450. You may also fill out warranty claims online at www.coyoteoutdoor.com. Please have your model number, serial number and proof of purchase available for any warranty claim.

Coyote Outdoor may require the return of defective parts for examination before issuing replacement parts. If you are required to return defective parts, shipping charges must be prepaid by the customer. Upon examination and to Coyote Outdoor's determination, if the original part is proven defective, Coyote Outdoor may approve your claim and elect to replace such parts without charge. In any instance, customer is responsible for shipping and handling of the replacement parts. Product repair as provided under this warranty is your exclusive remedy. Coyote Outdoor shall not be liable for any incidental or consequential damages for breach of any expressed or implied warranty on its products.

This warranty does not cover any failures or operating difficulties due to accidents, abuse, misuse, alteration, misapplication, vandalism, improper installation, maintenance or service, damages caused by flashback fire or grease fires, as set out in the Owner's Manual. This warranty does not cover scratches, dents, corrosion or discoloration caused by weather, heat, abrasive and chemical cleaners, pool or spa chemicals, and/or any tools used in the assembly or installation of this unit. This warranty does not cover paint loss, surface rust, corrosion or stainless steel discoloration which is considered normal wear and tear. This warranty does not cover the cost of any inconvenience, personal injury, or property damage due to improper use or product failure. Deterioration or damage due to severe weather conditions such as hail, hurricanes, earthquakes, tsunamis, tornadoes, terrorism, discoloration due to exposure to chemicals either directly or in the atmosphere, Acts of God/Forces of Nature are not covered by this limited warranty.

PINNACLE EXPRESS, INC. TERMS AND CONDITIONS

Orders: All orders and any subsequent change orders must be submitted in writing and delivered to Pinnacle Express, Inc. by mail, fax or e-mail. No telephone orders will be accepted. Special Order items are Non-Cancellable.

Prices: All prices are subject to change without notice and are exclusive of any sales or use taxes, shipping, delivery, special packaging, or handling charges that may apply to each customer or to each order.

Minimum Advertised Pricing: All sales are subject to Pinnacle Express, Inc. or Manufacturer minimum advertised prices. Failure to comply with minimum advertised prices will result in cancellation of any agreement and violators will not be entitled to purchase further products.

Minimum Sale Price: All sales are subject to Pinnacle Express, Inc. or Manufacturer minimum sale prices. Failure to comply with minimum sale prices will result in cancellation of any agreement and violators will not be entitled to purchase further products.

Freight and Handling: Pinnacle Express, Inc. reserves the right to ship products by its choice of carrier. All shipments are F.O.B. from place of shipment, and risk of loss shall pass to the Buyer upon delivery to the carrier at the point of shipment. Additional charges may apply for special handling and packaging.

Deliveries: Pinnacle Express, Inc. shall not be liable for failure to deliver or for delays in delivery or performance due to: (1) causes beyond its reasonable control; (2) acts of God, acts of Buyer, acts of civil or military authority, governmental allocations or controls, fires, strikes or other labor difficulties, riots or other civil disturbances, delays in its usual source of supply, delays in transportation; (3) any other commercial impracticability. In the event of such delay, the date of delivery or performance shall be extended for a period equal to the time lost by reason of the delay.

Claims: All claims for non-conforming delivery of Products must be made within twelve (12) days of receipt of shipment.

Damage or Loss: Any claim for damage or loss in shipment should be made to the carrier immediately by the customer. Products become the responsibility of the Buyer when accepted by the carrier in good condition from Pinnacle Express, Inc. and we are not able to process shipping damage claims.

Returns: Only Items marked in this Price List as "Stock Item" are subject to return. All other items are considered Special Order Items and are NOT RETURNABLE. No Products may be returned without a Pinnacle Express, Inc. Return Goods Authorization (RGA) Number issued prior to the return of Product. Any product returned without an RGA will be refused and returned to the sender. RGA's are valid for thirty (30) days only. All returns are subject to inspection before being approved for credit - products must be in salable condition to be considered for return or replacement. A 20% restocking charge will apply to all returns.

Payment: Unless otherwise noted, payment terms are Net Due on Receipt. Balances owed on invoices over 30 days old are subject to a 1.5% per month charge. Each shipment or delivery shall be deemed to have been sold under a separate and or independent contract and payment thereof shall be made in accordance with the terms of this agreement and of the invoice rendered by Pinnacle Express, Inc. Buyer agrees that title to the personal property described herein shall not vest in Buyer until paid in full. In the event of insolvency or the filing of bankruptcy by the Buyer, Buyer agrees to return all merchandise to Pinnacle Express, Inc.

Warranties: Products distributed by Pinnacle Express, Inc. are the products of reputable manufacturers sold under their respective brand or trade names. Pinnacle Express, Inc. shall use its best efforts to obtain from each manufacturer, in accordance with the manufacturer's warranty or customary practice, the repair or replacement of products that may prove defective in material or workmanship. The foregoing shall constitute the exclusive remedy of the Buyer and the sole obligation of Pinnacle Express, Inc. Except as to Title, THERE ARE NO WARRANTIES, EITHER WRITTEN, ORAL, IMPLIED, OR STATUTORY relating to the described products which shall extend beyond that described in this paragraph. NO WARRANTY OF MERCHANTABILITY OR OF FITNESS FOR PURPOSE SHALL APPLY.

Limitation of Liability: Pinnacle Express, Inc.'s liability on any claims for loss or damage arising out of this contract or from the performance or breach thereof or connected with the supplying of products hereunder, or its sale, resale, operation or use, whether based on warranty, contract, negligence or other grounds shall not exceed the price allowable for such products or parts thereof involved in the claim. Pinnacle Express, Inc. shall not, under any circumstances, be liable for any labor charges unless agreed upon in advance and in writing by Pinnacle Express, Inc. and the manufacturer of the products involved.

Pinnacle Express, Inc. shall not in any event be liable for special or consequential damages, including, but not limited to, loss of profits or revenue, loss of use of the product or any associated product, cost of capital, cost of substitute products, facilities or services, downtime costs, or claims of customers of the Buyer for such damages.

General: The possession of this Price List by anyone is not to be considered as an offer to sell any of the Products contained herein. This Price List supersedes all previous price lists or memorandums. Pinnacle Express, Inc.'s existing Trade Terms and Conditions remain in effect.

The above Terms and Conditions shall be a part of all Orders accepted by Pinnacle Express, Inc. and shall supercede any conflicting provisions of our customer's purchase orders. These terms and conditions are subject to change without notice.

GRILL INDEX

Standard Features

- Premium 304 Stainless Steel Construction
- Interior Hood Lights
- Double Walled Stainless Steel Hood
- Continuous Weld on Grill Box with Seamless Polished Edging
- Optional Cart, Covers and Insulated Jackets
- Ceramic Briquette for Even Distribution



C1C28 LP/NG
28" C-Series Grill

- Two High Performance Coyote Infinity Burners™
- 640 sq. in. of Grilling Surface
- Up to 40,000 BTU

Cart Model: C1C28-FS



C2C34 LP/NG
34" C-Series Grill

- Three High Performance Coyote Infinity Burners™
- 780 sq. in. of Grilling Surface
- Up to 60,000 BTU

Cart Model: C1C34CT



C2C36 LP/NG *
36" C-Series Grill

- Four High Performance Coyote Infinity Burners
- 875 sq. in. of Grilling Surface
- Up to 80,000 BTU

Cart Model: C1S36CT



C2C42
42" Charcoal Grill

- Five High Performance Coyote Infinity Burners™
- 1275 Sq. in. Grill Surface
- Up to 100,000 BTUs

Cart Model: C2CH42CT



C1CH36
36" Charcoal Grill

- Adjustable Fuel Tray
- Over 875 sq. in. Grill Surface
- For use with Charcoal or Wood Chips
- Adjustable Dampers for Controlling Air Flow

Cart Model: C1CH36CT



C1HY50 LP/NG
50" Centaur Hybrid Grill

- Charcoal Grill**
- Adjustable Fuel Tray
 - Over 600 sq. in. Grill Surface
 - For Use with Charcoal or Wood Chips
 - Adjustable Dampers for Controlling Air Flow

- Gas Grill**
- Two High Performance Coyote I-Burners™
 - Over 600 sq. in. Grill Surface
 - Up to 40,000 BTU

Cart Model: C1HY50CT



C2SL30 LP/NG
30" S-Series Grill

- Two High Performance Coyote Infinity Burners™; One Infrared Rear Burner; One Coyote RapidSear™ Burner
- 700 sq. in. of Grilling Surface
- Up to 70,000 BTU
- Backlit Knobs

Cart Model: C1S30CT



C2SL36 LP/NG *
36" S-Series Grill

- Three High Performance Coyote Infinity Burners™; One Infrared Rear Burner; One Coyote RapidSear™ Burner
- 875 sq. in. of Grilling Surface
- Up to 90,000 BTU
- Backlit Knobs

Cart Model: C1S36CT



C2SL42 LP/NG *
42" S-Series Grill

- Four High Performance Coyote Infinity Burners™; One Infrared Rear Burner; One Coyote RapidSear™ Burner
- 1275 sq. in. of Grilling Surface
- Up to 110,000 BTU
- Backlit Knobs

Cart Model: C1S42CT



C1CHCS
Asado Smoker

- Coyote Signature Smoking Grate
- 254 sq. in. Cooking Surface
- Heat Resistant Ceramic Construction

Cart Model: C1CHCS-FS



C1EL120SM
Portable Electric Grill

- 550° Maximum Temperature
- 156 Sq. in. Of Grilling Surface
- 5,000 Hour Heating

Cart Model: C2ELISL

* Pro-Series Grills

C2C36 = PRO36B
C2SL36 = PRO36SSR
C2SL42 = PRO42SSR

REFRIGERATION AND ISLAND ACCESSORIES INDEX

Outdoor Refrigerator: C1BIR24 (L/R)

- 24" wide
- Outdoor Rated, Freestanding with Lock Standard
- Stainless Steel Cabinet Construction; Graphite Interior
- Capacity of 5.5 Cubic Feet



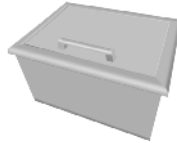
Outdoor Refrigerator: CBIR (L/R)

- 21" Wide
- Outdoor Rated, Freestanding
- Stainless Steel Exterior; White Interior
- Capacity of 4.1 Cubic Feet



Drop-in Cooler: CDIC

- Stainless Steel, Hinged Lid with High Quality Lid Seal
- Fully Insulated
- Drain Hole Stopper Included



Pull Out Ice Chest: CPOC

- Stainless Steel Construction
- Fully Insulated
- Beveled Trim



Refreshment Center: CRC

- Includes Drop-in Cooler with drain
- Convenient Shelf in Front of Sink
- Cutting Board Accessory for Sink



Coyote Single Side Burner: C1SB (LP/NG)

- Single side Burner
- 15K BTU Brass Burner
- Stainless Steel Lid Included
- Also Available for Cart mounting (C1CSB)



Coyote Dual Side Burner: C1DB (LP/NG)

- Dual Side Burner
- 15K BTU Brass Burners
- Stainless Steel Lid Included



Coyote Power Burner: C1PB

- Dual-valve Burner
- Up to 60k BTU Output
- Stainless Steel Lid Included



Drop-in Griddle: C1GRDL

- Drop-in Griddle
- Compatible with All Coyote Grills



Teppanyaki: CTEP

- Compatible with the Coyote Power Burner



Wok: CWOK

- Compatible with the Coyote Power Burner



Signature Grates: CSIGRATE 12 or 15

- 3 pack
- CSIGRATE12 - Compatible with 34" and 36" units
- CSIGRATE15 - Compatible with 28" and 42" units



Charcoal Trays: CCHTRAY 12 or 15

- 1 piece
- CCHTRAY12 - Compatible with 34" and 36" units
- CCHTRAY15 - Compatible with 28" and 42" units



Asado Accessories:

- ASADO-CT - Chicken Throne
- ASADO-CVR - Waterproof Cover
- ASADO-GG - Grid Grippers
- ASADO-HD - Heat Deflector
- ASADO-PS - Pizza Stone



REFRIGERATION AND ISLAND ACCESSORIES INDEX

17"x24" Single Access Door:

CSA1724 (HxW)

24"x17" Single Access Door:

CSA2417 (HxW)

20"x14" Single Access Door:

CSA2014 (HxW)

14"x20" Single Access Door:

CSA1420 (HxW)

- Magnetic Latches
- Beveled Edges



Coyote Warming Drawer: CWD

- Outdoor-rated ETL Certified
- Internal Electric Heating Element
- 30" Overall Width



Combination Storage Solutions:

CCD-POD

- Pull Out Drawer and Double Access Doors



CCD-2DC

- Two Drawer Cabinet and Double Access Doors



CCD-WD

- Warming Drawer, Pull out Drawer and Single Door



26" Double Access Doors: CDA2426

31" Double Access Door: CDA2431

39" Double Access Door: CDA2439

- Magnetic Latches
- Paper Towel Holder Inside Door (CDA2431 and CDA2439 only)



Single Storage Drawer with Shelf: CSSD

- Additional Shelf Space within Drawer



Two Drawer Cabinet: C2DC

- Large Storage Space within Each Drawer
- Self Contained



31" Single Door and 2 Drawers: CCD-2DC31

- 31" Single Access Door and Two Drawers



Three Drawer Cabinet: C3DC

- Extended Drawers on rollers Facilitates Smooth Operation
- Self Contained



31" Dry Pantry with Drawers: CDPC31

- 31" Wide
- Two Drawers
- Single Access Door
- Fully Sealed



Pullout Drawer: CPOD

- Extendable Drawers on Rollers
- Interior of Drawer Includes Cut-out to Secure Tank
- Can be Used to Hold a Trash Can



Pull Out Trash and Recycle:

CTC

- 27" Stainless steel trash and recycle cabinet



CSTC

- Single Trash or Recycle Center



Paper Towel Holder: CPTH

- Convenient and Easy to Install



Coyote Grill Covers

- Available for All Grills, Carts and Side Burners



ACCESSORIES CONTINUED

Sink - Universal Mount: C1SINK161E

- Universal Mount
- 304 Stainless Steel
- 16" W x 18" D
- Drain & Strainer Included



Insulated Jackets

- Premium 304 Stainless Steel Construction
- Ensures Safety for Grills Installed in Combustible Surfaces



Lump Charcoal: CLMP

- For use with any Coyote Charcoal Grill or Smoker



Wind Guards

- Premium 304 Stainless Steel Construction
- Deflects Wind Coming in From Back of Grill



Smoker Box: CSBX

- Premium 304 Stainless Steel Construction
- Fits all Coyote Gas Grills



Coyote Island Vent Cover: COYVENT

- Premium 304 Stainless Steel Construction
- Ensures Proper Venting for Island Applications



Universal Cart: C2UNCT

- Premium 304 Stainless Steel Construction
- Cart Comes with All Components Needed to Install C1PB, C1CHCS, CRC
- Propane Tank Holder within Vented Cabinet
- Side Shelves
- 30" Overall Width
- Includes Drop-in Cooler with Drain
- Removable Condiment Tray Insert for Drop-in Cooler
- Convenient Bottle Shelf, Towel Holder and Bottle Opener
- Cutting Board Accessory for Sink



* Shown with Refreshment Center

Hoods and Liners: C1HOOD+

- 304" Stainless Steel
- Horizontal Grain
- 30" Deep for Outdoor Installation
- 1 Year Warranty on Blower
- 3 Year Warranty on Stainless Steel
- Baffle Filter
- Variable Speed Control
- Two Halogen Lights





Pinnacle Express, Inc.
P.O. Box 1836 • Dundee, FL 33838
P: 800-292-8374 • F: 800-574-8805
www.pinnacleexpress.com