

AUGUSTINE WALL-MOUNT RANGE HOOD

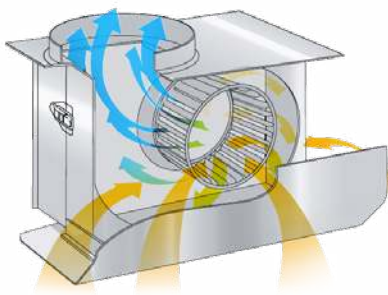


PREMIUM STAINLESS STEEL HOOD

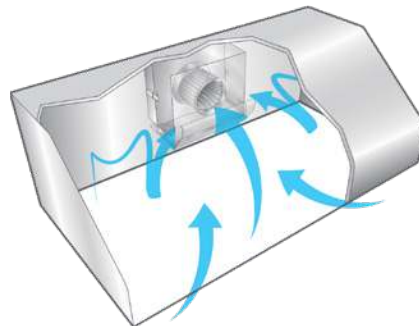
comes with satin brass lip treatment on front only, lip has 1 1/2" offset, (4) 2" vertical bands in satin brass attached with laminate.

AVAILABLE MODELS

PWVH30-SB Model	Width	CFM
PWVH30-236-SS/AS-SB	36"	600
PWVH30-348-SS/AS-SB	48"	900



QUIET AND POWERFUL

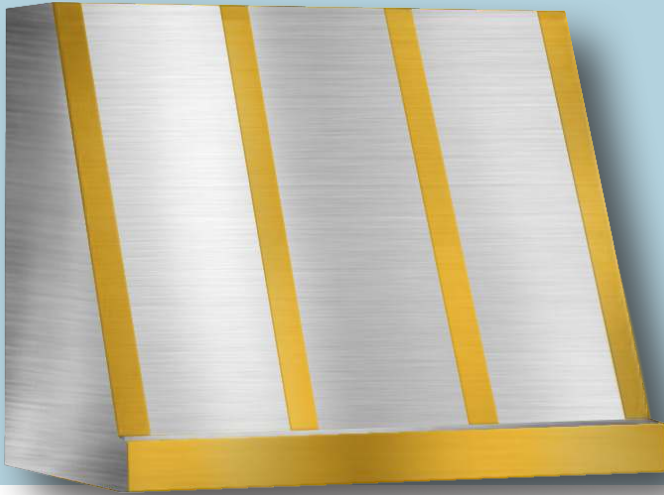


EFFICIENT



LIFETIME WARRANTY

AUGUSTINE WALL-MOUNT RANGE HOOD



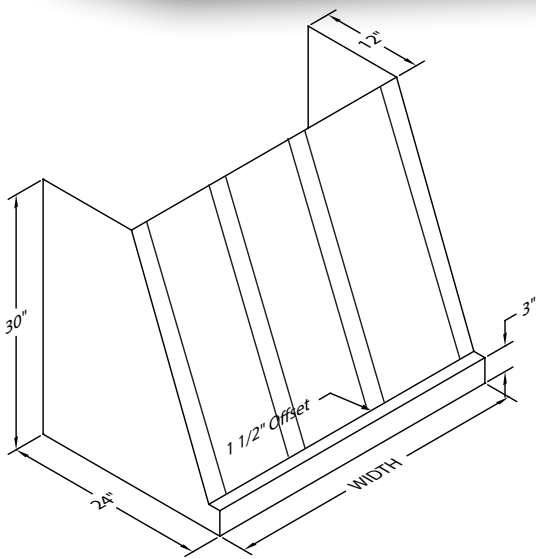
AVAILABLE MODELS

PWVH30-SB Model	Width	CFM	Duct
PWVH30-236-SS/AS-SB	36"	600	8"
PWVH30-348-SS/AS-SB	48"	900	6" & 8"

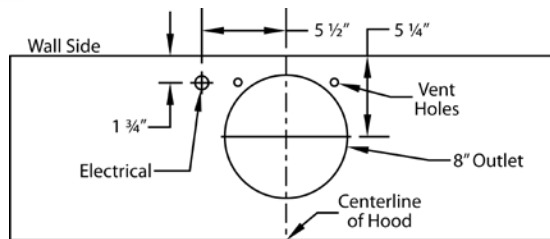
DUCT COVERS*

Model	Width	Height	CLG.
WDCRND-36/12-PWVH30-SS/AS-SB	36"	12"	9'
WDCRND-36/24-PWVH30-SS/AS-SB	36"	24"	10'
WDCRND-48/12-PWVH30-SS/AS-SB	48"	12"	9'
WDCRND-48/24-PWVH30-SS/AS-SB	48"	24"	10'

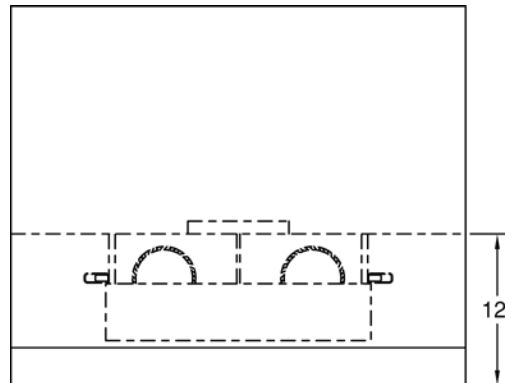
* DUCT COVER COMES WITH MATCHING BANDS THAT MUST BE INSTALLED ON SITE.



CONNECTION DIAGRAM

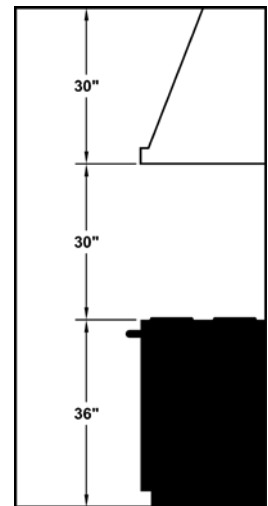


600 CFM B200 Dual Blower (Top View)



(Front View)

RECOMMENDED MOUNTING HEIGHT



*Exceeding recommended mounting height may compromise performance.

ELECTRICAL/MECHANICAL SPECIFICATIONS FOR BLOWER UNIT

Model	Volts	Amps+	Hz	RPM	CFM SP@0.0"	Equiv. CFM\$	CFM SP@0.1"	CFM SP@0.2"	CFM SP@0.3"	Minimum Round Duct Size (50 sq. in.)	Sones#
B200 Dual	115	4.0	60	1550	600	900	531	480	430	8"	6.5

+ This model is equipped with LED lighting: (2 lights: 30" - 41", 3 lights: 42" - 53", 4 lights: 54" - 66").

\$ Because the Magic Lung® blower uses centrifugal filtration rather than conventional baffle or mesh filters, the Magic Lung® blower can handle cooking equipment with higher cubic feet per minute (CFM) requirements and can deliver equivalent CFM much more efficiently than other filtration systems. When comparing the Magic Lung® with other blower units made by other manufacturers, use the "Equivalent CFM".

Ratings in accordance with the Standard Test Code by the Energy Systems Laboratory of the Texas Engineering Experiment Station. This specification sheet is subject to change without notice.

